

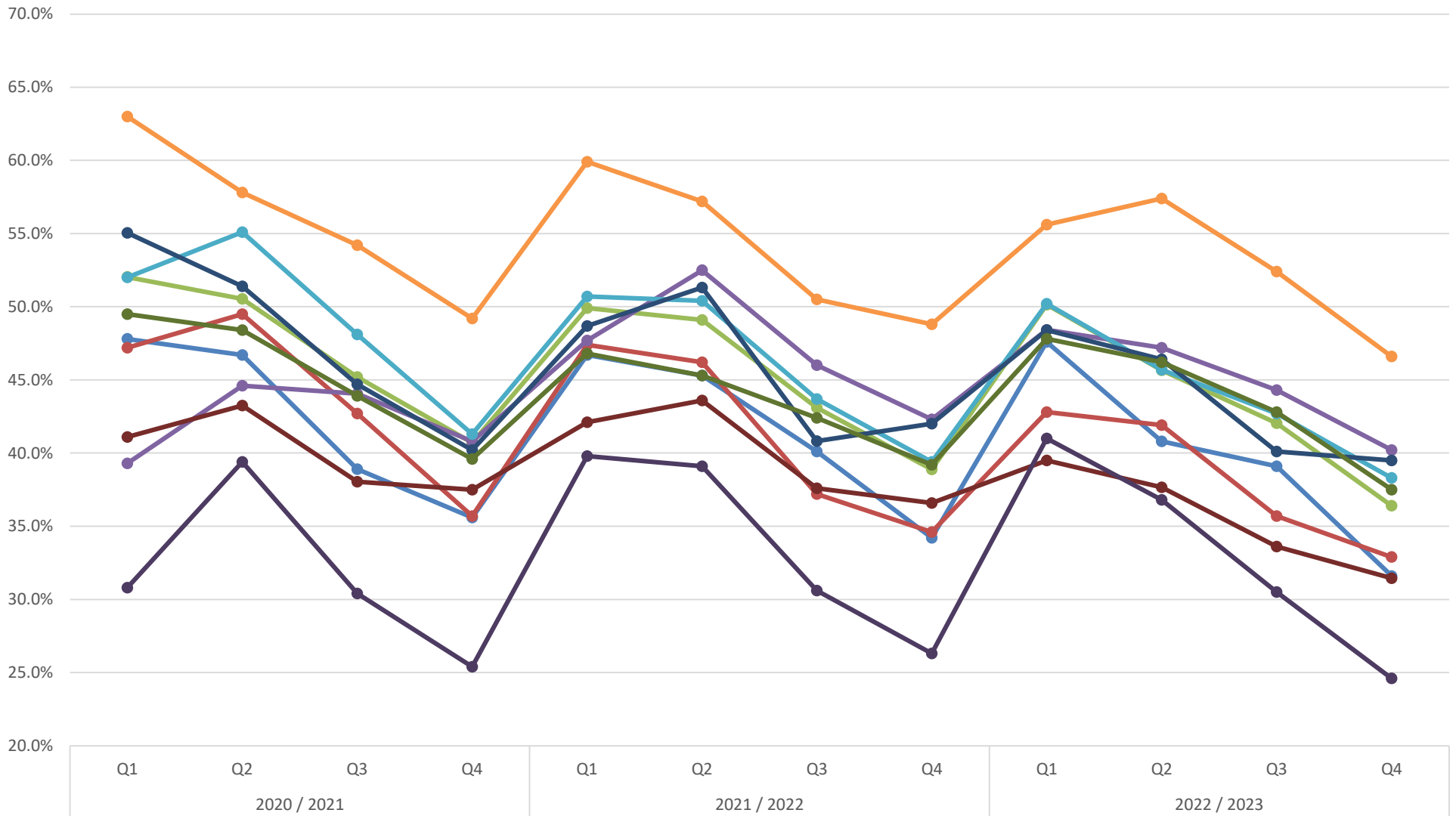


Performance reporting for SSB				Waste Collection Authorities								Waste Disposal Authority	Unitary Authority	SWP average	Staffordshire Waste Partnership					
Performance parameter	Waste Data Flow categories	Year	Quarter	Cannock Chase DC	East Staffordshire BC	Lichfield DC	Newcastle-under-Lyme BC	Stafford BC	Staffordshire Moorlands DC	South Staffordshire DC	Tamworth BC	Staffordshire County Council	Stoke-on-Trent City Council	SWP average	Year	Quarter	Parameter			
Weight of residual waste collected per household (sent for incineration)	NI191: Residual household waste collected per household (kg)	2020 / 2021	Q1	141.2	141.0	129.3	138.9	123.0	99.3	131.1	135.4	142.7	164.9	135	2020 / 2021	Q1	Weight of residual waste collected per household			
			Q2	133.6	128.3	126.2	126.4	118.9	109.6	124.3	132.5	159.0	150.4	131		Q2				
			Q3	130.8	118.4	128.0	113.9	113.3	101.3	124.9	128.0	145.9	139.1	124		Q3				
			Q4	139.8	143.4	127.7	121.5	125.7	106.1	135.3	129.3	158.5	165.5	135		Q4				
		2021 / 2022	Q1	130.2	133.7	124.4	117.7	119.2	136.4	119.2	130.2	136.4	119.2	159.3	155.9	130		2021 / 2022	Q1	
			Q2	132.7	131.1	127.9	102.7	116.4	109.2	120.5	123.8	139.6	146.3	125	Q2					
			Q3	121.7	140.5	124.8	107.6	115.9	103.3	131.5	124.8	145.6	133.7	125	Q3					
			Q4	136.1	132.2	124.2	101.6	121.4	103.2	119.8	125.6	149.4	155.3	127	Q4					
		2022 / 2023	Q1	118.1	134.6	110.6	102.3	114.4	99.7	121.0	127.5	145.2	141.4	121	2022 / 2023	Q1				
			Q2	127.6	120.7	112.4	99.1	111.9	91.3	114.2	119.9	136.4	138.8	117		Q2				
			Q3	113.2	129.4	114.2	97.7	111.8	129.4	95.0	123.8	125.0	133.5	117		Q3				
			Q4	135.0	128.8	116.9	100.5	115.5	100.3	115.4	123.2	140.3	152.0	123		Q4				
						CCDC	ESBC	LDC	NuLBC	SBC	SMDC	SSDC	TBC	SCC	SoTCC					
		Total recycling rate (all waste streams)	NI192: % of household waste sent for reuse, recycling or composting	2020 / 2021	Q1	47.8%	47.2%	52.0%	39.3%	52.0%	63.0%	55.1%	41.1%	49.5%	30.8%	48%		2020 / 2021	Q1	Total recycling rate (all waste streams)
					Q2	46.7%	49.5%	50.5%	44.6%	55.1%	57.8%	51.4%	43.2%	48.4%	39.4%	49%			Q2	
					Q3	38.9%	42.7%	45.2%	44.1%	48.1%	54.2%	44.7%	38.0%	43.9%	30.4%	43%			Q3	
Q4	35.6%				35.7%	40.7%	40.8%	41.3%	49.2%	40.2%	37.5%	39.6%	25.4%	39%	Q4					
2021 / 2022	Q1			46.7%	47.4%	49.9%	47.7%	50.7%	59.9%	48.7%	42.1%	46.8%	39.8%	48%	2021 / 2022	Q1				
	Q2			45.3%	46.2%	49.1%	52.5%	50.4%	57.2%	51.3%	43.6%	45.3%	39.1%	48%		Q2				
	Q3			40.1%	37.2%	43.7%	46.0%	43.7%	40.8%	43.7%	37.6%	42.4%	30.6%	41%		Q3				
	Q4			34.2%	34.6%	38.9%	42.3%	39.4%	48.8%	42.0%	36.6%	39.2%	26.3%	38%		Q4				
2022 / 2023	Q1			47.6%	42.8%	50.1%	48.4%	50.2%	55.6%	48.4%	39.5%	47.8%	41.0%	47%	2022 / 2023	Q1				
	Q2			40.8%	41.9%	45.7%	47.2%	45.7%	57.4%	46.4%	37.7%	46.2%	36.8%	45%		Q2				
	Q3			39.1%	35.7%	42.0%	44.3%	42.7%	52.4%	40.1%	33.6%	42.8%	30.5%	40%		Q3				
	Q4			31.6%	32.9%	36.4%	40.2%	38.3%	46.6%	39.5%	31.5%	37.5%	24.6%	36%		Q4				
				CCDC	ESBC	LDC	NuLBC	SBC	SMDC	SSDC	TBC	SCC	SoTCC							
Percentage of waste sent to landfill	NI193: % of municipal waste landfilled			2020 / 2021	Q1									0.8%	6.9%	4%	2020 / 2021	Q1	Percentage of waste sent to landfill	
					Q2									2.7%	3.2%	3%		Q2		
					Q3										0.9%	3.6%		2%		
		Q4											1.0%	3.5%	2%	Q4				
		2021 / 2022	Q1										3.6%	8.7%	6%	2021 / 2022	Q1			
			Q2										1.5%	3.4%	2%		Q2			
			Q3										1.0%	1.2%	1%		Q3			
			Q4										2.0%	1.4%	2%		Q4			
		2022 / 2023	Q1										1.1%	1.1%	1%	2022 / 2023	Q1			
			Q2										0.1%	2.0%	1%		Q2			
			Q3										0.3%	1.1%	1%		Q3			
			Q4										0.4%	0.8%	1%		Q4			
						CCDC	ESBC	LDC	NuLBC	SBC	SMDC	SSDC	TBC	SCC	SoTCC					
		Percentage of waste recycled (dry recyclable materials)	% household waste sent for recycling	2020 / 2021	Q1	19.8%	18.9%	24.7%	17.2%	20.6%	21.0%	20.2%	26.0%	20.7%	13.3%	20%	2020 / 2021	Q1		Percentage of waste recycled (dry recyclable materials)
					Q2	19.1%	19.2%	23.2%	18.6%	20.8%	19.6%	20.9%	25.1%	20.9%	20.0%	21%		Q2		
					Q3	22.2%	22.3%	26.4%	22.3%	23.5%	21.8%	23.5%	23.5%	28.5%	23.8%	21.2%		24%		
Q4	24.3%				22.9%	29.1%	25.9%	28.3%	21.8%	24.4%	31.2%	26.4%	23.7%	26%	Q4					
2021 / 2022	Q1			21.2%	19.8%	23.8%	20.4%	22.9%	21.2%	16.0%	24.5%	21.9%	20.5%	21%	2021 / 2022	Q1				
	Q2			19.8%	19.7%	22.1%	20.4%	22.1%	18.1%	17.0%	25.5%	19.5%	18.1%	20%		Q2				
	Q3			23.3%	20.9%	26.3%	22.0%	22.3%	19.1%	28.7%	27.6%	23.5%	21.0%	23%		Q3				
	Q4			23.2%	23.4%	27.3%	23.0%	25.0%	24.5%	24.3%	30.1%	25.2%	21.0%	25%		Q4				
2022 / 2023	Q1			19.5%	13.5%	21.7%	19.2%	20.9%	17.8%	18.3%	22.5%	21.4%	21.0%	20%	2022 / 2023	Q1				
	Q2			18.5%	18.3%	22.5%	20.8%	22.5%	20.8%	22.5%	23.7%	23.5%	21.2%	21%		Q2				
	Q3			21.4%	17.9%	23.3%	23.6%	23.0%	22.8%	21.0%	23.8%	24.4%	23.1%	22%		Q3				
	Q4			20.7%	20.0%	25.7%	26.2%	25.4%	25.6%	22.7%	26.4%	24.5%	22.8%	24%		Q4				
				CCDC	ESBC	LDC	NuLBC	SBC	SMDC	SSDC	TBC	SCC	SoTCC							
Percentage of waste composted (garden waste, or garden and food combined)	% household waste sent for composting			2020 / 2021	Q1	28.0%	28.3%	27.4%	22.0%	31.4%	42.0%	34.8%	19.1%	28.1%	17.4%	28%	2020 / 2021	Q1	Percentage of waste composted (garden waste, or garden and food combined)	
					Q2	27.3%	30.2%	27.3%	24.6%	34.3%	38.1%	30.5%	18.1%	27.4%	19.3%	28%		Q2		
					Q3	16.3%	20.4%	24.9%	18.5%	24.9%	18.3%	13.3%	18.5%	9.5%	20.0%	9.1%		18%		
		Q4	11.0%		12.7%	11.6%	10.9%	13.1%	24.1%	15.8%	6.3%	13.1%	1.7%	12%	Q4					
		2021 / 2022	Q1	25.2%	27.5%	26.1%	22.6%	27.7%	38.7%	22.0%	17.2%	24.7%	19.2%	25%	2021 / 2022	Q1				
			Q2	25.1%	26.4%	27.1%	25.1%	25.1%	39.1%	24.0%	18.1%	29.4%	17.7%	26%		Q2				
			Q3	16.4%	16.1%	16.8%	17.1%	21.4%	31.3%	22.4%	10.0%	18.7%	9.4%	18%		Q3				
			Q4	11.0%	11.2%	11.5%	12.7%	14.4%	24.2%	17.6%	6.5%	13.9%	2.2%	13%		Q4				
		2022 / 2023	Q1	28.1%	29.2%	28.4%	23.5%	29.3%	37.8%	30.1%	17.0%	26.3%	19.9%	27%	2022 / 2023	Q1				
			Q2	22.4%	23.5%	23.2%	20.4%	24.1%	36.5%	26.5%	14.0%	22.6%	15.6%	23%		Q2				
			Q3	17.7%	17.7%	18.7%	14.1%	19.7%	29.5%	19.1%	9.8%	18.2%	7.3%	17%		Q3				
			Q4	10.9%	11.7%	12.9%	6.8%	10.7%	21.0%	16.8%	5.0%	12.8%	1.8%	11%		Q4				
						CCDC	ESBC	LDC	NuLBC	SBC	SMDC	SSDC	TBC	SCC	SoTCC					
		Percentage of waste sent for AD (food waste)	% household waste sent for anaerobic digestion (formerly part of BVPI 82b)	2020 / 2021	Q1				0.1%							0%	2020 / 2021	Q1		Percentage of waste sent for AD (food waste)
					Q2				1.4%							1%		Q2		
					Q3				3.3%									3%		
Q4							4.0%								4%	Q4				
2021 / 2022	Q1						4.9%								5%	2021 / 2022	Q1			
	Q2						6.9%								7%		Q2			
	Q3						6.9%								7%		Q3			
	Q4						6.6%								0		Q4			
2022 / 2023	Q1						5.7%								0	2022 / 2023	Q1			
	Q2						5.9%								0		Q2			
	Q3						6.9%								0		Q3			
	Q4						7.3%								0		Q4			
				CCDC	ESBC	LDC	NuLBC	SBC	SMDC	SSDC	TBC	SCC	SoTCC							
Performance parameter	Waste Data Flow categories			Year	Quarter	Cannock Chase DC	East Staffordshire BC	Lichfield DC	Newcastle-under-Lyme BC	Stafford BC	Staffordshire Moorlands DC	South Staffordshire DC	Tamworth BC	Staffordshire County Council	Stoke-on-Trent City Council	SWP average	Year	Quarter	Parameter	
Performance reporting for SSB				Waste Collection Authorities								Waste Disposal Authority	Unitary Authority	SWP average	Staffordshire Waste Partnership					

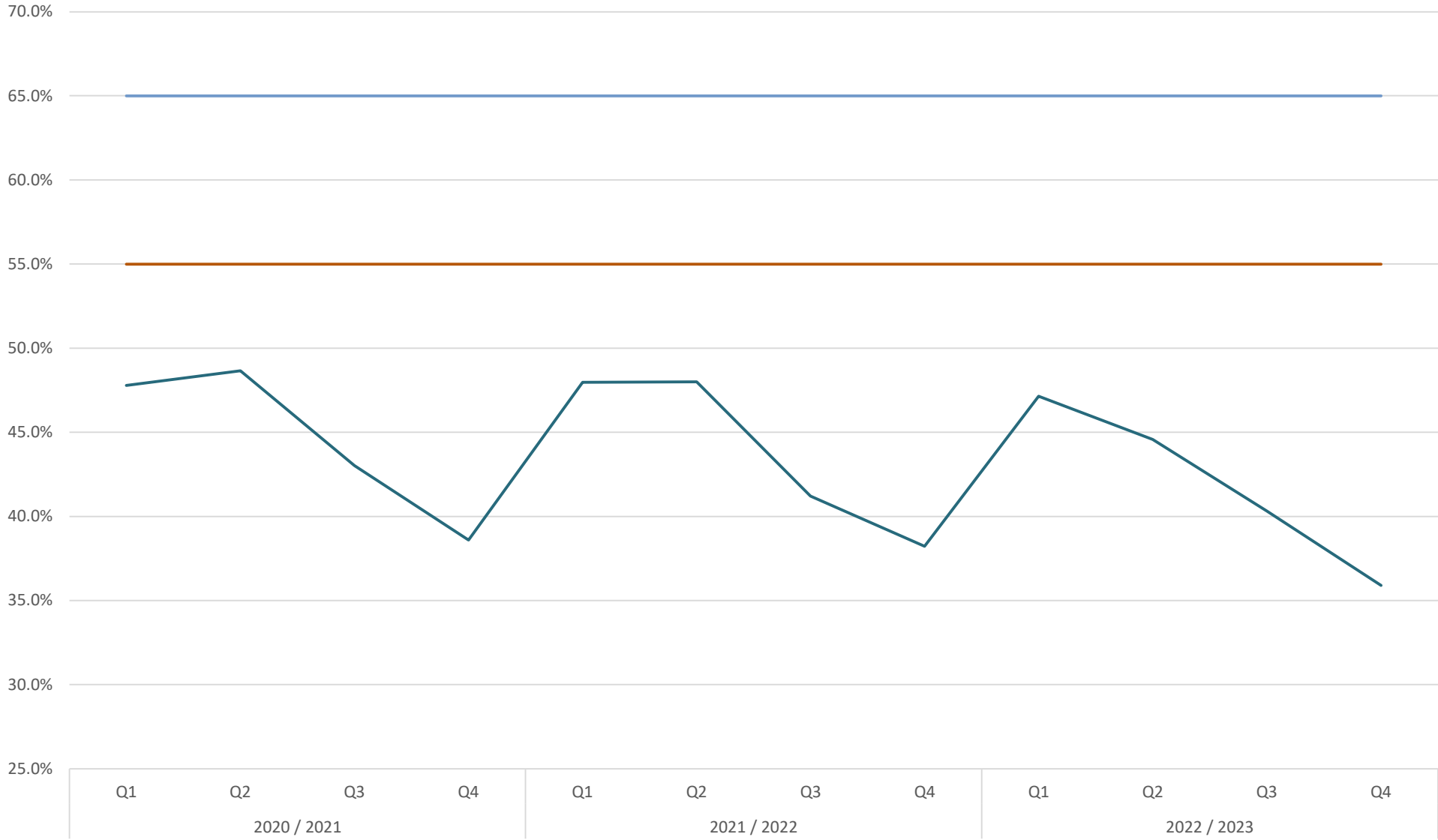
Performance reporting for SSB			Waste Collection Authorities								Waste Disposal Authority	Unitary Authority	SWP average		
Performance parameter	Waste Data Flow categories	Year	Cannock Chase DC	East Staffordshire BC	Lichfield DC	Newcastle-under-Lyme BC	Stafford BC	Staffordshire Moorlands DC	South Staffordshire DC	Tamworth BC	Staffordshire County Council	Stoke-on-Trent City Council		Year	Parameter
Weight of residual waste collected per household (sent for incineration)	NI191: Residual household waste collected per household (kg)	2020 / 2021	136.4	132.8	127.8	125.2	120.2	104.1	128.9	131.3	151.5	155.0	131	2020 / 2021	Weight of residual waste collected per household
		2021 / 2022	133.6	130.9	126.6	119.9	119.3	103.3	128.7	131.5	155.7	152.7	130	2021 / 2022	
		2022 / 2023	133.4	131.6	127.0	113.9	118.6	103.2	127.7	129.4	150.8	151.7	129	2022 / 2023	
			CCDC	ESBC	LDC	NuLBC	SBC	SMDC	SSDC	TBC	SCC	SoTCC			
Total recycling rate (all waste streams)	NI192: % of household waste sent for reuse, recycling or composting	2020 / 2021	42.3%	43.8%	47.1%	42.2%	49.1%	56.1%	47.8%	40.0%	45.4%	31.5%	45%	2020 / 2021	Total recycling rate (all waste streams)
		2021 / 2022	42.0%	43.8%	46.6%	44.3%	48.8%	55.3%	46.2%	40.2%	44.7%	33.8%	45%	2021 / 2022	
		2022 / 2023	41.6%	43.0%	46.2%	46.3%	47.6%	55.1%	46.2%	40.3%	43.9%	33.7%	44%	2022 / 2023	
			CCDC	ESBC	LDC	NuLBC	SBC	SMDC	SSDC	TBC	SCC	SoTCC			
Percentage of waste sent to landfill	NI193: % of municipal waste landfilled	2020 / 2021									1.3%	4.3%	3%	2020 / 2021	Percentage of waste sent to landfill
		2021 / 2022									2.0%	4.7%	3%	2021 / 2022	
		2022 / 2023									1.7%	4.8%	3%	2022 / 2023	
			CCDC	ESBC	LDC	NuLBC	SBC	SMDC	SSDC	TBC	SCC	SoTCC			
Percentage of waste recycled (dry recyclable materials)	% household waste sent for recycling	2020 / 2021	21.3%	20.8%	25.8%	21.0%	23.3%	20.8%	22.5%	27.7%	22.9%	19.5%	23%	2020 / 2021	Percentage of waste recycled (dry recyclable materials)
		2021 / 2022	21.7%	21.1%	25.6%	21.8%	23.9%	20.9%	21.4%	27.3%	23.2%	21.4%	23%	2021 / 2022	
		2022 / 2023	21.9%	21.2%	25.4%	22.2%	23.9%	20.4%	20.5%	27.4%	22.9%	21.7%	23%	2022 / 2023	
			CCDC	ESBC	LDC	NuLBC	SBC	SMDC	SSDC	TBC	SCC	SoTCC			
Percentage of waste composted (garden waste, or garden and food combined)	% household waste sent for composting	2020 / 2021	20.7%	22.9%	21.3%	19.0%	25.9%	34.1%	23.6%	13.3%	22.1%	11.9%	21%	2020 / 2021	Percentage of waste composted (garden waste, or garden and food combined)
		2021 / 2022	20.0%	22.7%	21.0%	19.1%	25.0%	33.3%	20.4%	12.8%	21.3%	12.3%	21%	2021 / 2022	
		2022 / 2023	19.4%	21.7%	20.9%	19.3%	23.8%	33.5%	18.8%	12.8%	20.8%	11.9%	20%	2022 / 2023	
			CCDC	ESBC	LDC	NuLBC	SBC	SMDC	SSDC	TBC	SCC	SoTCC			
Percentage of waste sent for AD (food waste)	% household waste sent for anaerobic digestion (formerly part of BVPI 82b)	2020 / 2021				2.2%							2%	2020 / 2021	Percentage of waste sent for AD (food waste)
		2021 / 2022				3.4%							3%	2021 / 2022	
		2022 / 2023				4.8%							5%	2022 / 2023	
			CCDC	ESBC	LDC	NuLBC	SBC	SMDC	SSDC	TBC	SCC	SoTCC			
Performance parameter	Waste Data Flow categories	Year	Cannock Chase DC	East Staffordshire BC	Lichfield DC	Newcastle-under-Lyme BC	Stafford BC	Staffordshire Moorlands DC	South Staffordshire DC	Tamworth BC	Staffordshire County Council	Stoke-on-Trent City Council	SWP average	Year	Parameter
Performance reporting for SSB			Waste Collection Authorities								Waste Disposal Authority	Unitary Authority			

Total recycling rate (%)



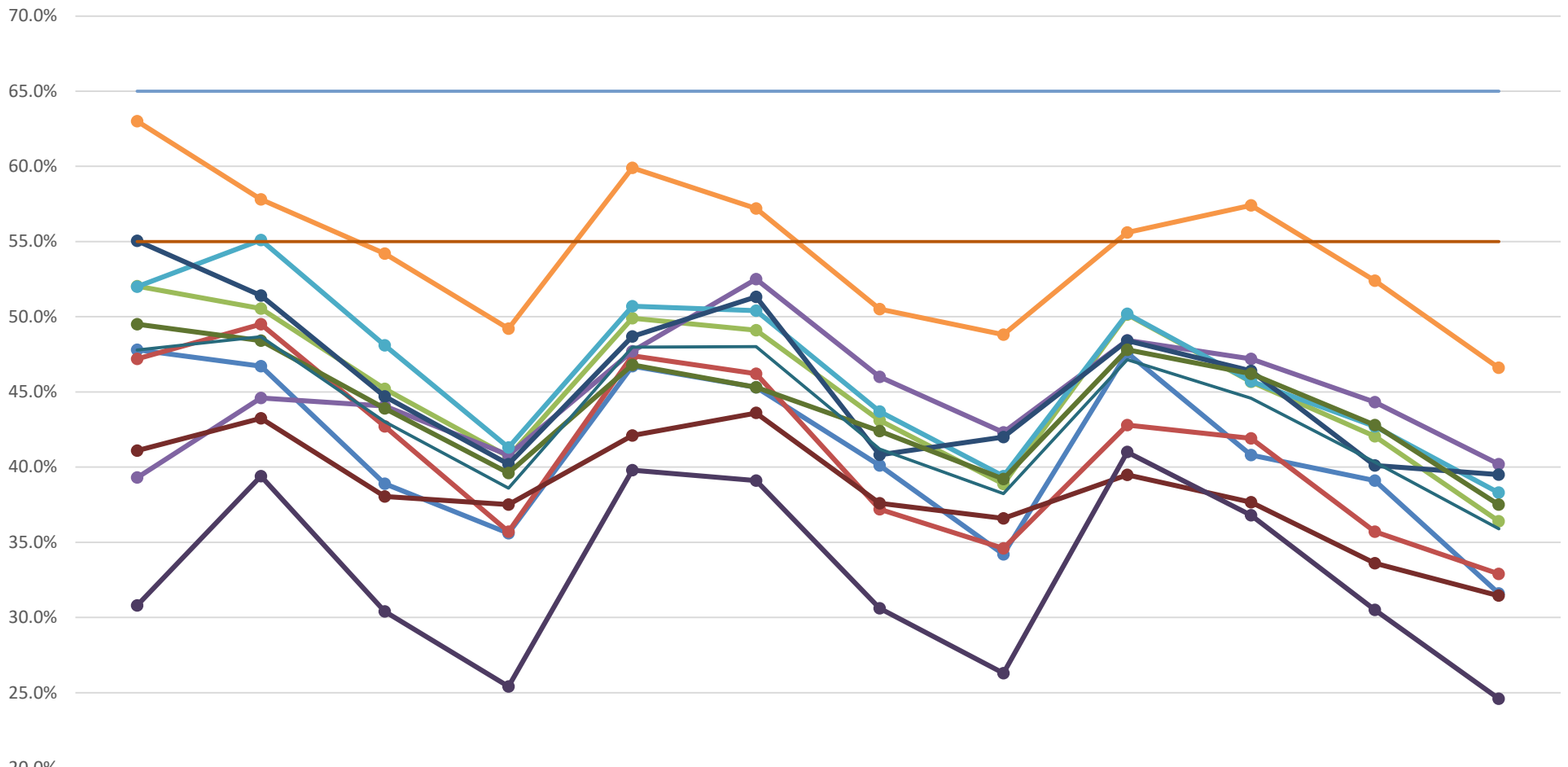
- Cannock Chase DC
- East Staffordshire BC
- Lichfield DC
- Newcastle-under-Lyme BC
- Stafford BC
- Staffordshire Moorlands DC
- South Staffordshire DC
- Tamworth BC
- Staffordshire County Council
- Stoke-on-Trent City Council

Total recycling rate (%)



— SWP average — PFI deal target — National target

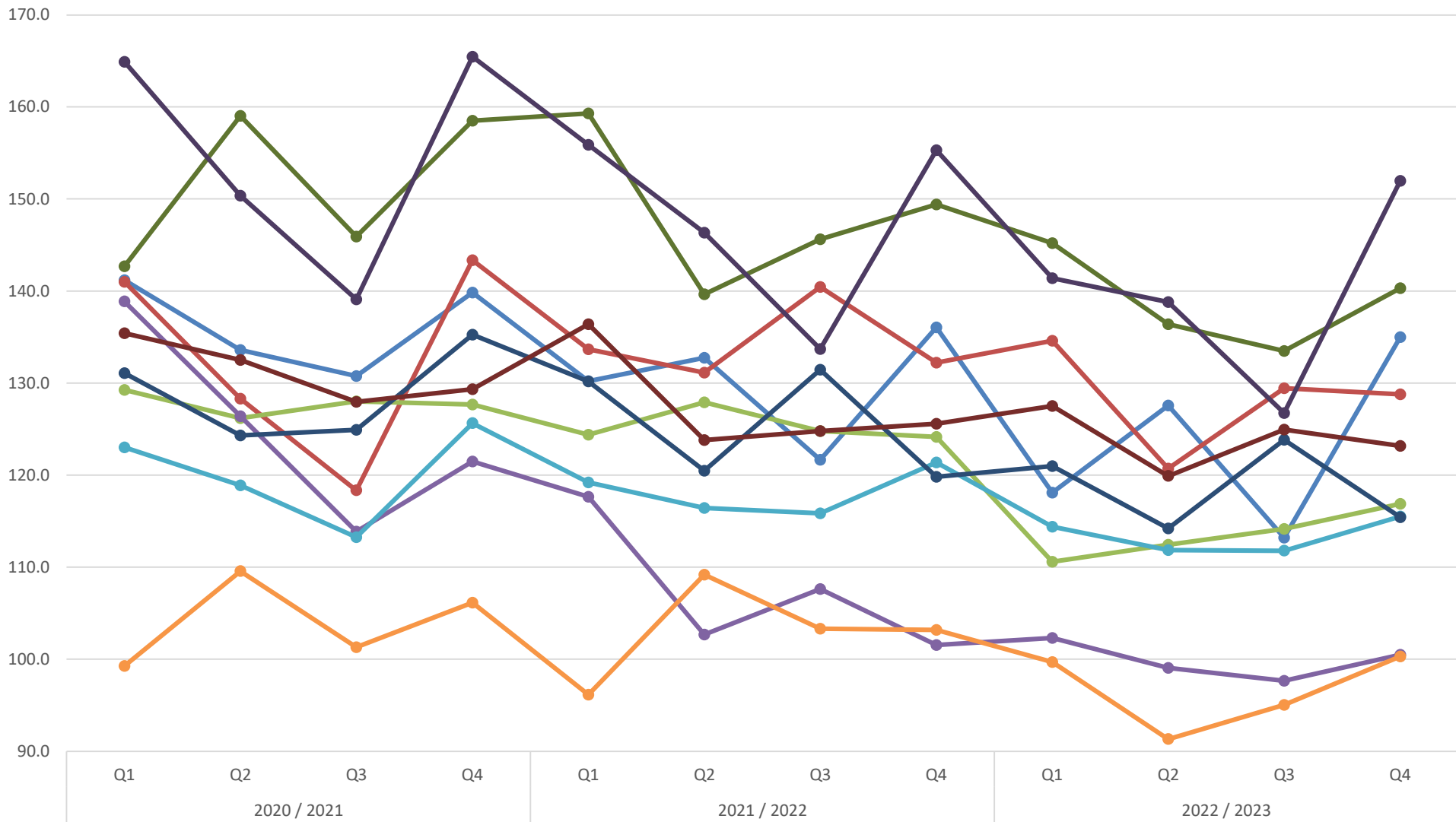
Total recycling rate (%)



2020 / 2021				2021 / 2022				2022 / 2023			
Q1	Q2	Q3	Q4	Q1	Q2	Q3	Q4	Q1	Q2	Q3	Q4

- | | | | | |
|---|---|--|---|--|
| ● Cannock Chase DC | ● East Staffordshire BC | ● Lichfield DC | ● Newcastle-under-Lyme BC | ● Stafford BC |
| ● Staffordshire Moorlands DC | ● South Staffordshire DC | ● Tamworth BC | ● Staffordshire County Council | ● Stoke-on-Trent City Council |
| — SWP average | — PFI deal target | — National target | | |

Weight of residual waste collected per household (kg)



- Cannock Chase DC
 ● East Staffordshire BC
 ● Lichfield DC
 ● Newcastle-under-Lyme BC
 ● Stafford BC
- Staffordshire Moorlands DC
 ● South Staffordshire DC
 ● Tamworth BC
 ● Staffordshire County Council
 ● Stoke-on-Trent City Council