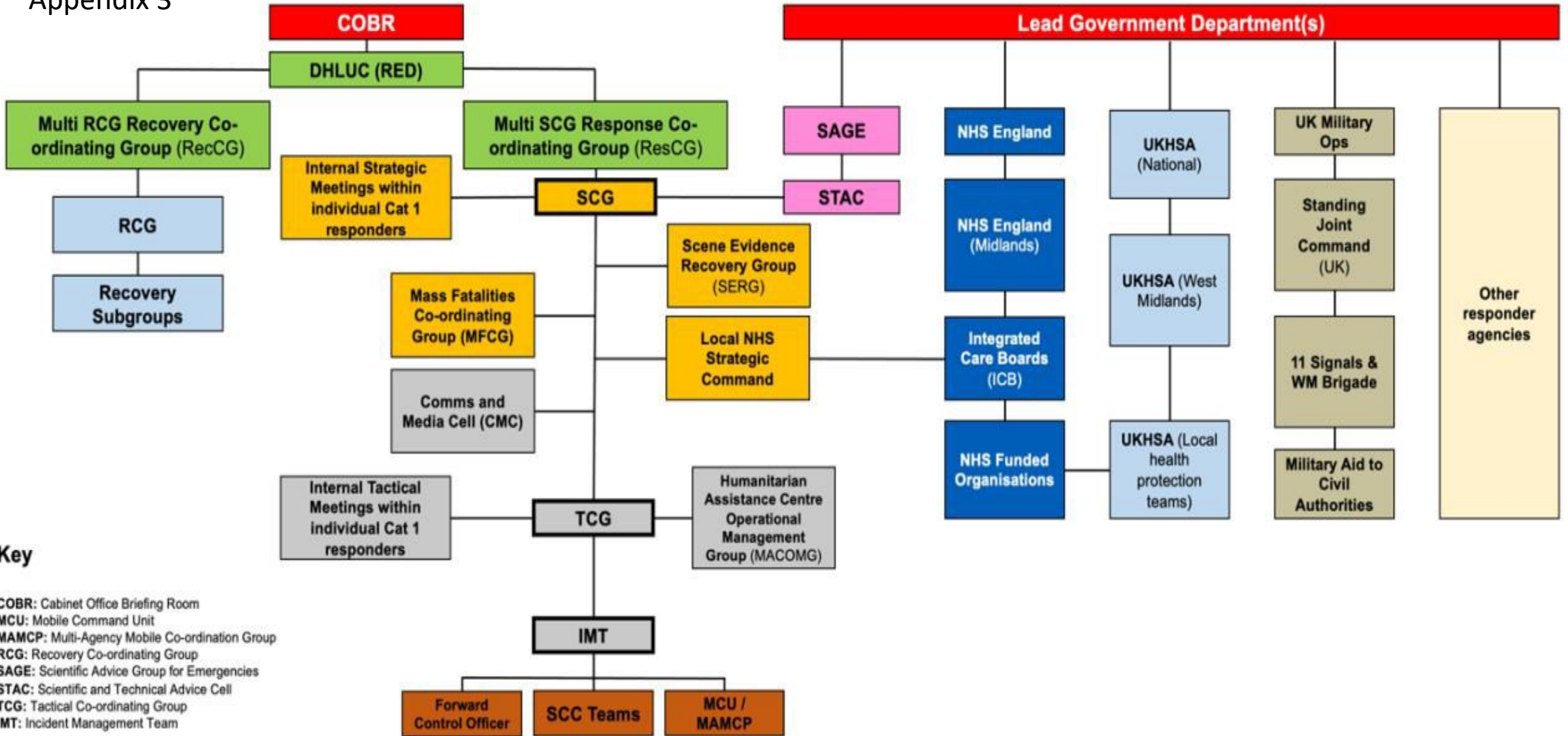


# Appendix 3



## Key

- COBR: Cabinet Office Briefing Room
- MCU: Mobile Command Unit
- MAMCP: Multi-Agency Mobile Co-ordination Group
- RCG: Recovery Co-ordinating Group
- SAGE: Scientific Advice Group for Emergencies
- STAC: Scientific and Technical Advice Cell
- TCG: Tactical Co-ordinating Group
- IMT: Incident Management Team