

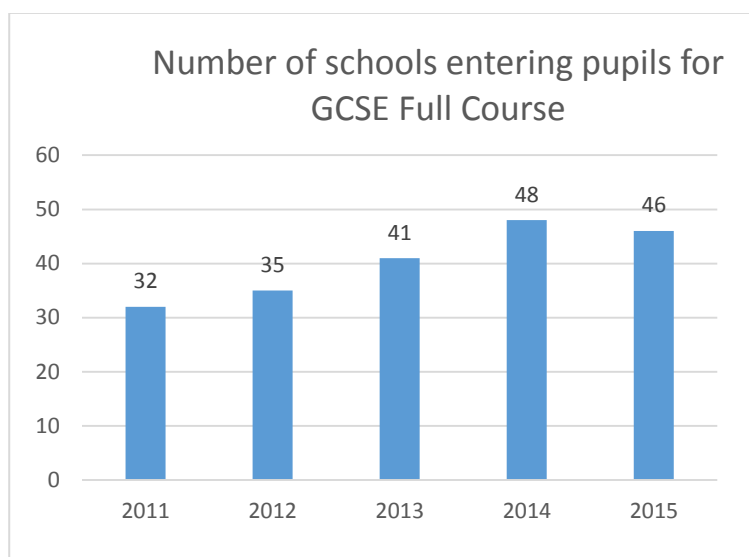
## Examination Results 2015-2016

Full Course GCSE in Religious Studies

Results Analysis 2015

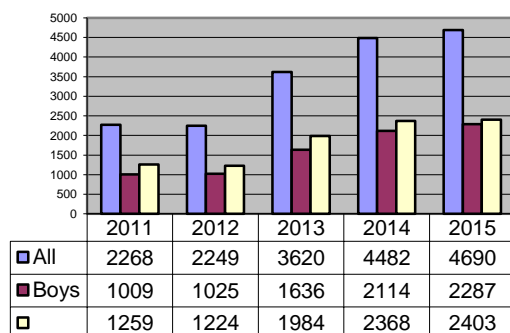
National Average A\* to C 70.6% (72% in 2014)

Staffordshire Average A\* to C 68.4% (68.5% in 2014)



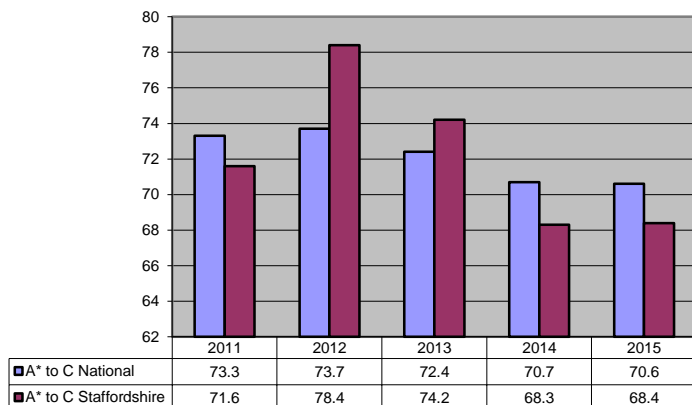
- The number of schools entering pupils for Full Course GCSE typically fluctuates slightly year on year. This year the number has dropped from 48 in 2014 to 46 in 2015.

Number of students entered for Full Course GCSE



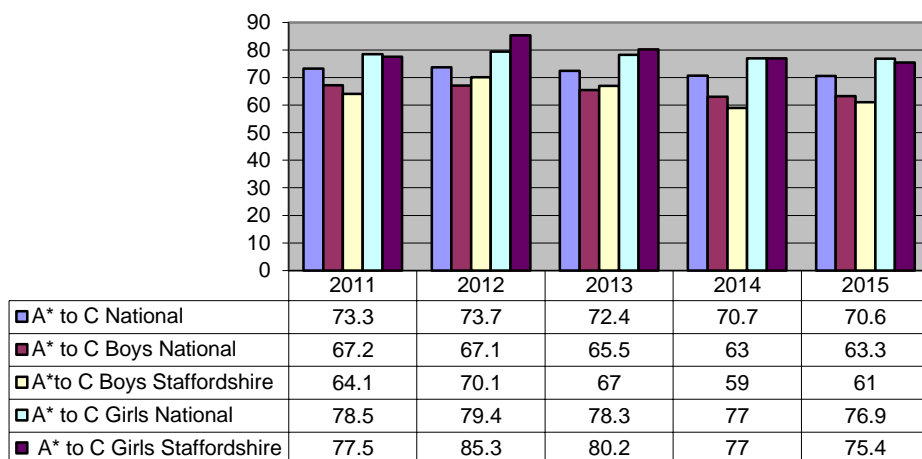
- The numbers of entries has significantly increased once again this year for both boys and girls. 4690 in 2015 and 4482 in 2014
- Since 2012 there are now 2441 more entries for full course GCSE
- This increase reflects the national changes in the examination system and the de-valuing of the short course GCSE.
- The increase in entries is once again a strong indication that in Staffordshire the feared impact on RE of changes nationally has been relatively small.
- The increase is also a positive indication that the KS4 recommendations in the agreed Syllabus are being followed and that schools are working hard to credit their students learning and achievements.

### Percentage of students gaining A\* to C grades in Full Course



- The percentage of pupils attaining grades A\* to C in Full Course nationally has slightly decreased from 2014 at 70.7% to 70.6% in 2015. This coincides with a slight decrease in Staffordshire to 68.4. (-.01%)
- The differential between the 2015 national average and the Staffordshire average is -2.2% percentage points. Over the past three years Staffordshire students have performed slightly below the national average.
- This decline may reflect the fact that as entries have increased sharply this may be the only the second attempt at full course RE for many schools, there may be staffing pressures in schools, staff may need further training in teaching the full course as opposed to the short course, teaching time for pupils may not have been increased to take account of the extra content involved in the short course.

### Attainment by gender Full Course



- In 2015 Staffordshire boys have performed below the national average and girls have slightly below the average for girls nationally.

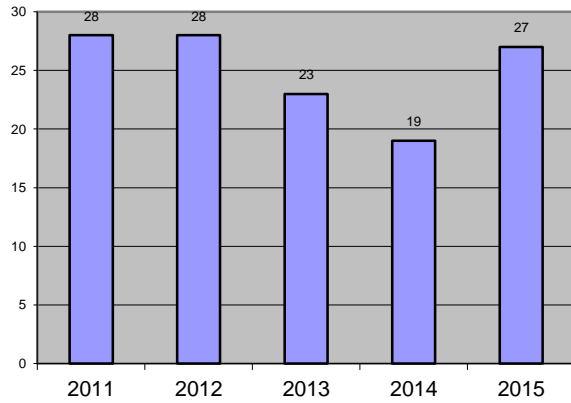
# Advanced Subsidiary (AS) GCE in Religious Studies Results Analysis 2015

National Average A to B 43.1% 27.1% (2014)

Staffordshire Average A to B 38.7% 20.7% (2014)

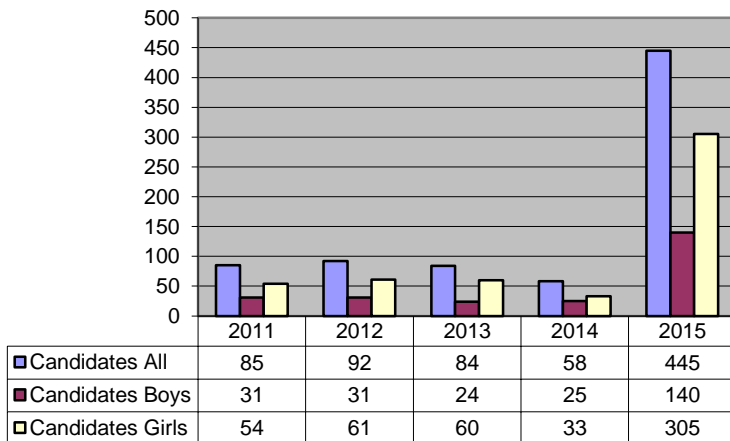
## Year 12

No of schools entering students for AS in Year 12



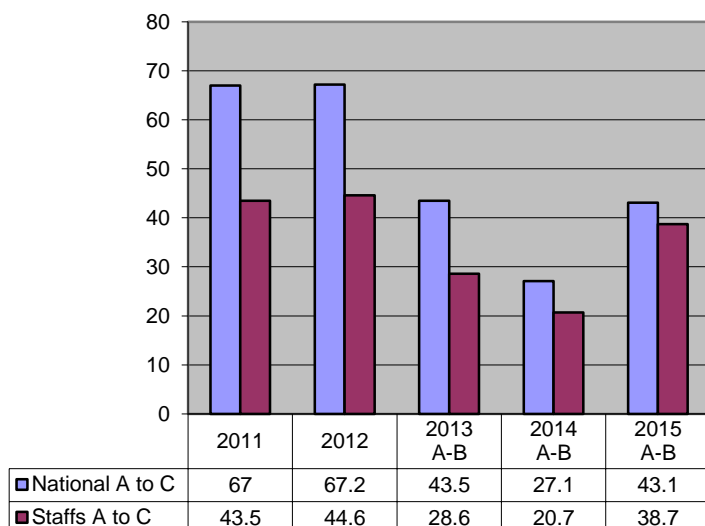
- The number of schools entering students for AS in Year 12 has risen this year to 27 schools, a substantial leap from 19 schools in 2014.

Number of students entered for Advanced Level AS in Year 12



- The numbers of students entered for AS has risen considerable to 445 students in 2015, compare this with 58 pupils in 2014.

### Percentage of students gaining A to C in Year 12

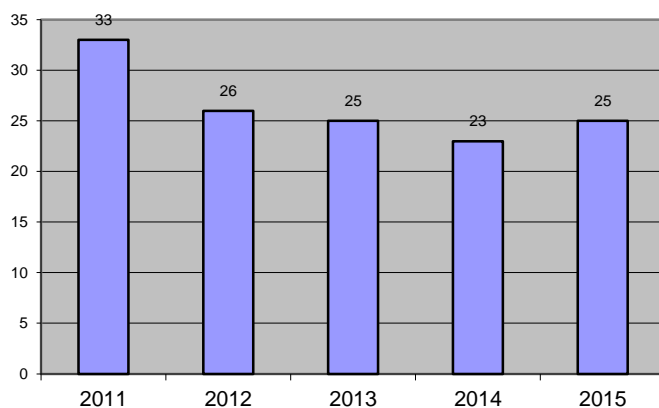


- This graph shows results in Staffordshire for grades A-C at AS RS. The measure has changed, however to A-B which is reflected in the figures for 2013 and 2014.
- Grades nationally and in Staffordshir have risen. Results in Staffordshire at the higher grades A-B fall below the national average.

### Advanced level GCE in Religious Studies Results Analysis 2015

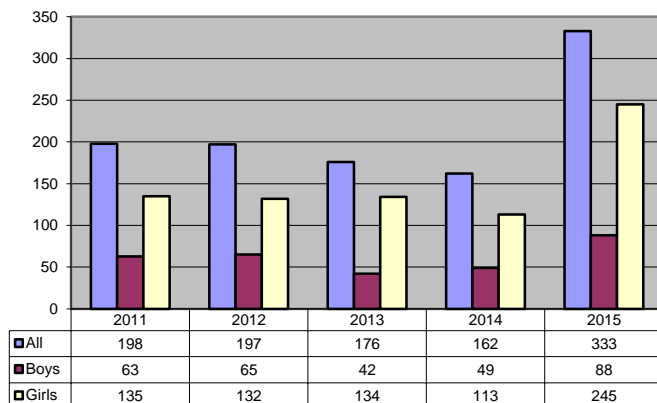
**National Average A\* to B 54.5% (51.7 % in 2014)**  
**Staffordshire Average A to B 52% (42.6 % in 2014)**

Number of schools entering pupils for  
Advanced Level A2



- The number of schools entering students for Advanced Level (A2) RS fluctuates slightly from year to year.
- 25 schools entered students in 2015.

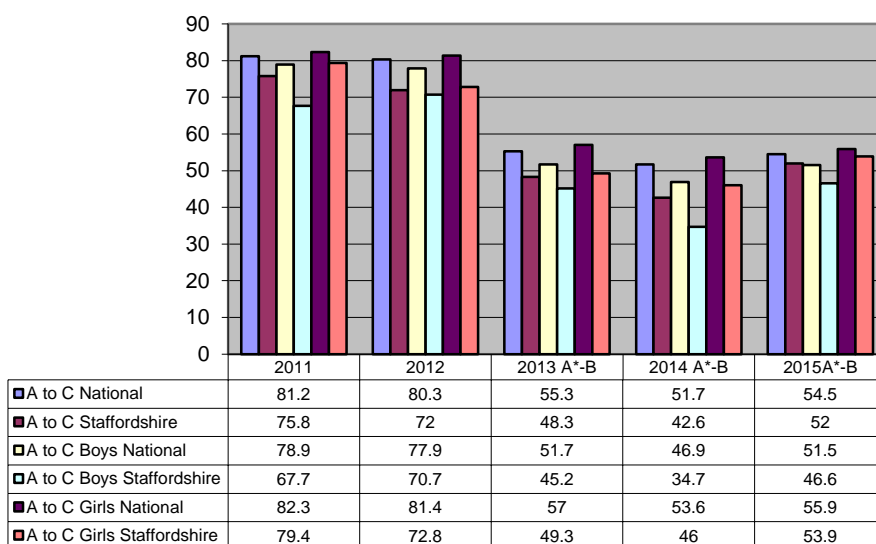
### Number of students entered for Advanced Level (A2)



- The number of Staffordshire pupils entered for Advanced Level (A2) has remained fairly consistent for the past five years but has risen considerably this year.
- The ratio of girls to boys is approximately 3:1

- This graph shows results in Staffordshire for grades A\*-C at RS. The measure has changed, however to A-B which is reflected in the figures for 2013, 2014 and 2015.
- Results in Staffordshire at the higher grades A-B have been below the national average for both boys and girls in 2013 and 2014 this trend continues in 2015, but the gap is narrowing.

### Percentage of students gaining A to C grades at Advanced Level (A2)



## Staffordshire schools well above the national average

### GCSE Full Course

School	Number On Role	Number Of Entries	Well above national average A* to C (72.%)
Sir Thomas Boughey High School.	153	15	100
Tamworth Enterprise College and AET Academy	184	18	100
Norton Canes High School, Cannock	87	30	100
The Friary School, Lichfield	199	90	96.7
Wolstanton High School, Newcastle	191	30	93.3
The Staffordshire University Academy	78	12	91.7
University Academy Kidsgrove	125	11	90.9
John Taylor High School	214	213	90.6
Moorside High School	145	143	86
King Edward VI School, Lichfield	214	21	85.7
Clayton Hall Business & Language College	192	189	84.7
Blessed William Howard High Catholic	122	118	83.9
Painsley Catholic College	196	193	83.4
Walton High School, Stafford	202	17	82.4
Chase Terrace Technology College	228	21	81
Sir John Fisher Catholic High	162	159	81.1
Paulet High School	119	10	80
Thomas Alleyne's High School, Uttoxeter	263	252	78.6
Netherstowe	113	18	77.8
The De Ferrers Academy	310	304	77.6
Westwood College	194	57	77.2
Blessed Robert Sutton Catholic Sports College	116	107	75.7
Abbot Beyne School	108	94	72.3

**Staffordshire schools well below the national average**

**GCSE Full Course**

<b>school</b>	<b>NOR</b>	<b>NOE</b>	<b>Well below national average A* to C (70.7%)</b>
Cannock Chase High School	184	98	31.6
NCHS - The Science College	74	68	33.8
Clough Hall Technology School, Kidsgrove	69	66	25.8
Stafford Sports College	62	52	21.2

**Staffordshire schools well above the national average**

**AS level**

<b>school</b>	<b>NOE</b>	<b>Above national Average A to B (43.1%)</b>
John Taylor High	37	70.3
Thomas Alleyne's	13	69.2
Blessed William Howard Catholic	20	50
Kingsmead	10	50
Sir John Fisher	12	50
Sir Graham Balfour	2	50
Cheslyn High	11	45.5
Walton High	16	43.8

**Staffordshire schools well above the national average**

**A level**

<b>school</b>	<b>NOE</b>	<b>Above national Average A to B (54.5%)</b>
Painsley Catholic	2	100
Walton High School	18	77.8
Codsall High	4	75
Moorside High	4	75
Erasmus Darwin Academy	7	71.4
Cardinall Griffiths High	18	66.7
Blessed William Howard Catholic	24	58.3