

Standing Advisory Council on Religious Education
12th February 2014
Report of the Deputy Chief Executive and Director of People
An Analysis of Examination Results for Staffordshire Schools 2013

1 Purpose of Report

To present SACRE members with a statistical analysis of the standards achieved in GCSE (Full Course and Short Course), Advanced Level and Advanced Subsidiary GCE Religious Studies by pupils examined in the summer of 2013.

2 Summary

Members of SACRE will receive a graphical analysis of the standards achieved.

3 Recommendation

That members of SACRE receive the report.

That letters be sent on behalf of SACRE to identified schools offering congratulations or Support as appropriate.

4 Background

A statistical analysis of the standards achieved by Staffordshire schools in examinations held in summer 2013 is attached to this report.

Key issues identified in the analysis are as follows:

Overall

- a) In 2013 entries for GCSE Full Course have risen sharply and GCSE Short Course numbers have fallen. This reflects changes in the examination system. It is positive that entries overall have not declined and that examination and accreditation is still favoured at KS4. The Staffordshire Agreed Syllabus recommends that students at KS4 study an approved examination syllabus; these findings show that the vast majority of schools are compliant.
- b) Overall 84 students across 23 schools were entered for AS level and 176 students across 25 schools were entered for A Level at the end of KS5. There is a small drop in the number of entries at both AS and A Level.

Full Course GCSE

- a) The number of schools entering pupils for the Full Course has risen sharply this year. 41 of Staffordshire's 54 schools enter pupils for Full Course GCSE.
- b) The percentage of pupils attaining grades A* to C has risen above the national average for 2013 for the second year running. The differential is +1.8 percentage points which amounts to a slightly positive residual.

Short Course GCSE

- a) 40 out of 54 Staffordshire secondary schools enter pupils for the Short Course. The number of entries has fallen substantially this year.
- b) The number of Staffordshire students gaining the higher grades A* to C is broadly in line with national figures.

Advanced Subsidiary (AS) Level GCE

- a) The number of entries at AS level has fallen slightly this year.
- b) Recruitment of boys to the course remains an issue, with the ratio at approximately 3:1 in both years.
- c) The percentage of pupils gaining higher grades A-B is below the national figures.
- d) Attainment in AS level continues to be an issue.

Advanced (A) Level GCE

- a) The number of pupils entered for A Level (A2) has fallen slightly. This is not unexpected and is a reflection of the fall in entries in 2012.
- b) Attracting boys to the course remains an issue with the ratio remaining at about 3:1.
- c) At the higher grades Staffordshire pupils attainment is broadly in line with the national average.

Teachers and pupils in Staffordshire schools are to be congratulated on their hard work and continued efforts to raise the standard of attainment in the County.

Effective ways to raise standards at all levels are under consideration.

5 Equal Opportunities

This report has been prepared in line with the County Council's policy on Equal Opportunities.

6 Financial Implications

There are no financial implications

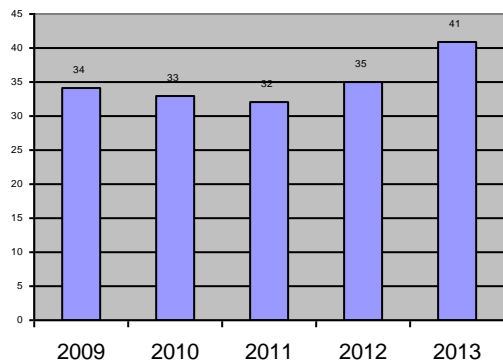
Contact Officer:	Emma Jardine
Telephone Number	01785 277997

Full Course GCSE in Religious Studies Results Analysis 2013

National Average A* to C 72.4%

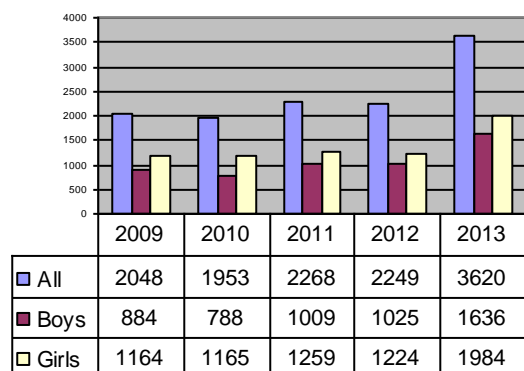
Staffordshire Average A* to C 74.2%

Number of schools entering pupils for
GCSE Full Course



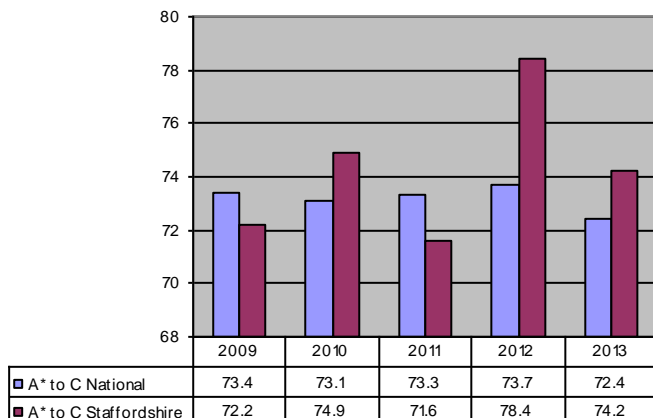
- The number of schools entering pupils for Full Course GCSE typically fluctuates slightly year on year. This year the number has risen sharply from 35 to 41.
- This reflects changes in the national examination system.

Number of students entered for Full
Course GCSE



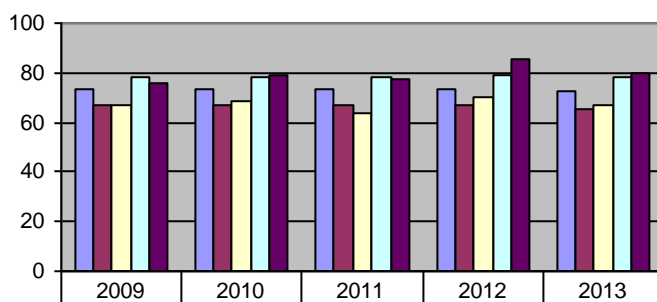
- The numbers of entries has significantly increased this year for both boys and girls.
- This increase reflects the national changes in the examination system.
- The increase in entries is a strong indication that in Staffordshire the feared impact on RE of changes nationally regarding the introduction of the E Bacallaureate has been relatively small.
- The increase is also a positive indication that the KS4 recommendations in the agreed Syllabus are being followed.

Percentage of students gaining A* to C grades in
Full Course



- The percentage of pupils attaining grades A* to C in Full Course nationally has remained consistent with an increase of 0.4 percentage points
- This year the Staffordshire schools have performed well above the national average.
- The differential between the national average and the Staffordshire average is +1.8 percentage points.

Attainment by gender Full Course

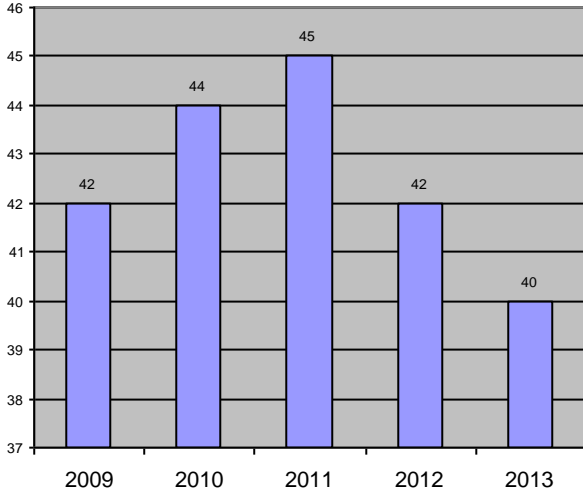


- In 2013 both Staffordshire boys and girls have performed above the average for boys and girls nationally.

	2009	2010	2011	2012	2013
A* to C National	73.4	73.1	73.3	73.7	72.4
A* to C Boys National	67.1	67.1	67.2	67.1	65.5
A* to C Boys Staffordshire	66.9	68.9	64.1	70.1	67
A* to C Girls National	78.5	78	78.5	79.4	78.3
A* to C Girls Staffordshire	76.2	78.9	77.5	85.3	80.2

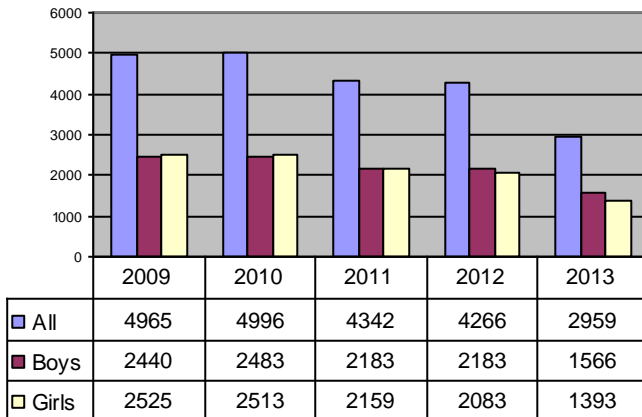
Short Course GCSE in Religious Studies Results Analysis 2013
National Average A* to C 53.9%
Staffordshire Average A* to C 49.6%

Number of schools entering students for Short Course GCSE



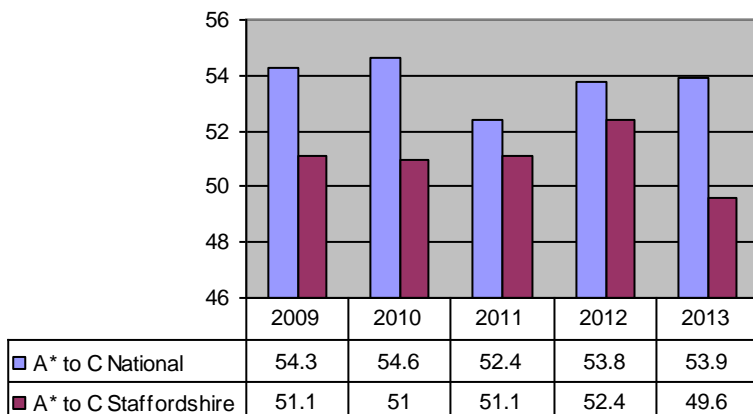
- The number of schools entering students for Short Course RS has fallen slightly this year.
- This coincides with the increase in schools entering pupils for full course GCSE.

Number of students entered for Short Course GCSE



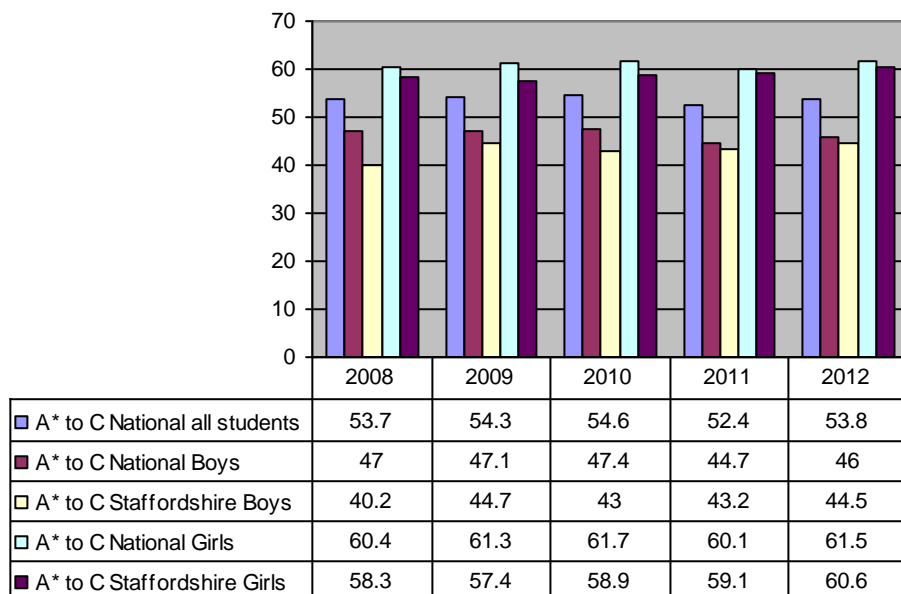
- The number of pupils entered for the Short Course GCSE RS has fallen in 2012, again this coincides with a sharp increase in full course entries.

**Percentage of students gaining A* to C
for Short Course GCSE**



- The national average for 2013 has remained broadly the same but Staffordshire's average has decreased.
- There could be several reasons lying behind this including time allocated for teaching the subject and also the possibility that where pupils are more able they are entered for the more demanding Full Course GCSE instead.

Attainment by gender for Short Course GCSE



- The percentage of girls achieving grades A* to C is higher than the national average for all pupils but below that for girls in 2012.
- The percentage of Staffordshire boys attaining the higher grades is lower than the national average for all pupils and below the national average for boys.

Advanced Subsidiary (AS) GCE in Religious Studies Results Analysis 2013

National Average A to B

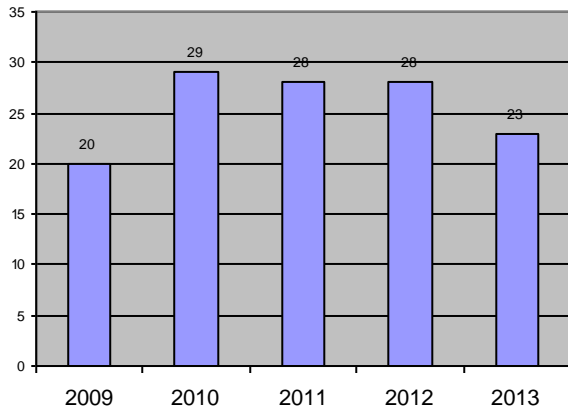
43.5%

Staffordshire Average A to B

28.6%

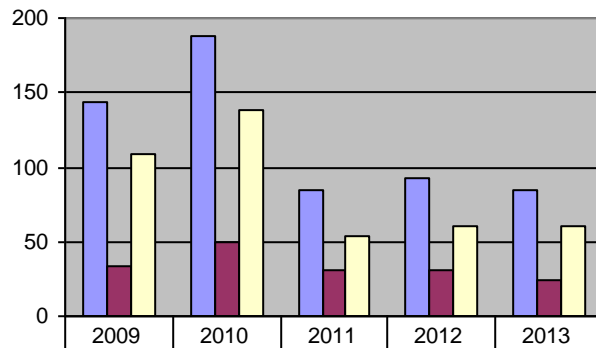
Year 12

No of schools entering students for AS in Year 12



- The number of schools entering students for AS in Year 12 has fallen slightly this year.

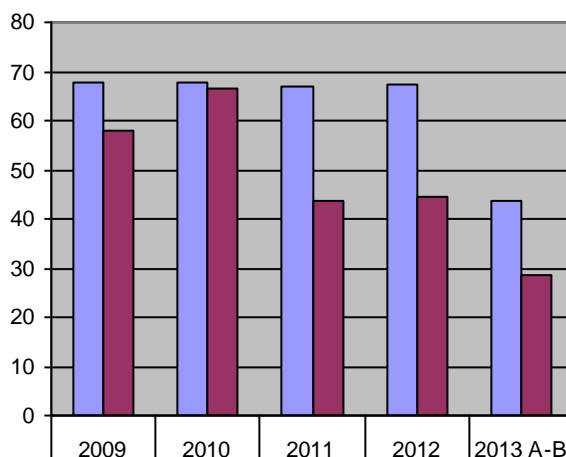
Number of students entered for Advanced Level AS in Year 12



- The numbers of students entered for AS has fallen slightly.
- Staffordshire continues to be in line with entries nationally.

	2009	2010	2011	2012	2013
■ Candidates All	143	188	85	92	84
■ Candidates Boys	34	50	31	31	24
■ Candidates Girls	109	138	54	61	60

Percentage of students gaining A to C in Year 12



- This graph shows results in Staffordshire for grades A-C at AS RS. The measure has changed, however to A-B which is reflected in the figures for 2013.
- Results in Staffordshire at the higher grades A-B continue to fall below the national average.

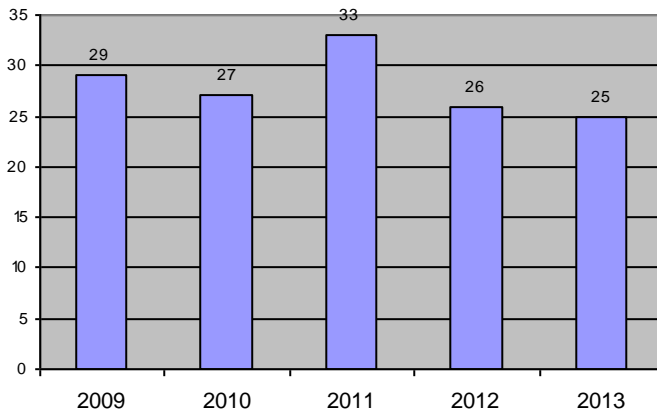
	2009	2010	2011	2012	2013 A-B
■ National A to C	67.9	67.6	67	67.2	43.5
■ Staffs A to C	58.1	66.5	43.5	44.6	28.6

Advanced (A) Level GCE in Religious Studies Results Analysis 2013

National Average A* to B 51.7 %

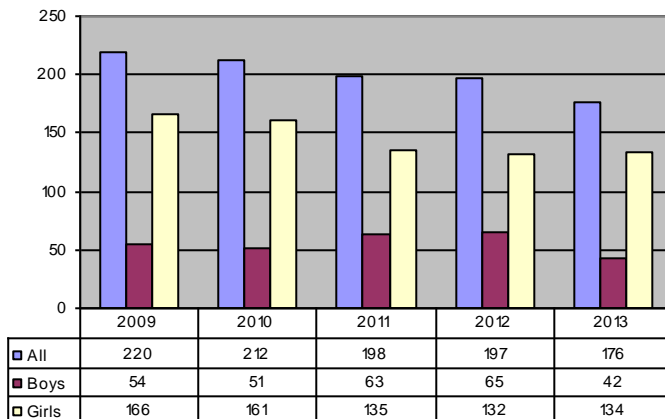
Staffordshire Average A to B 48.3 %

Number of schools entering pupils for
Advanced Level A2



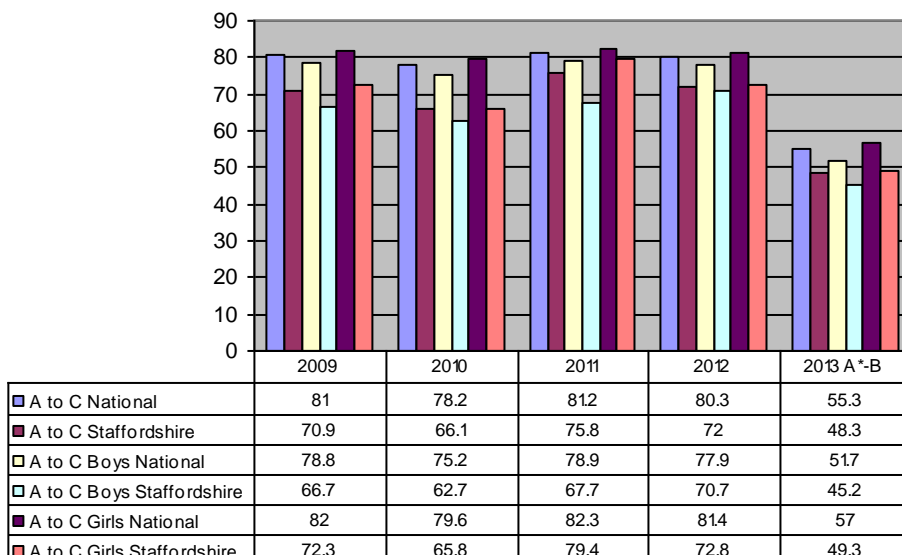
- The number of schools entering students for Advanced Level (A2) RS fluctuates slightly from year to year.
- 25 schools entered students in 2013.

Number of students entered for
Advanced Level (A2)



- The number of Staffordshire pupils entered for Advanced Level (A2) has remained fairly consistent for the past two years but has fallen slightly this year.
- The ratio of girls to boys is approximately 3:1

Percentage of students gaining A to C grades at Advanced Level
(A2)



- This graph shows results in Staffordshire for grades A*-C at AS RS. The measure has changed, however to A-B which is reflected in the figures for 2013.
- Results in Staffordshire at the higher grades A-B continue to fall below the national average for both boys and girls.

Staffordshire schools well above the national average

GCSE Full Course

School	Entries	Well above national average A* to C (72.4%)
Alleyne's High School, Stone	192	82.3
Cannock Chase High School	17	100
Edgecliff High School, Kinver	46	93.5
John Taylor High School	80	92.5
King Edward VI High School – A Language College	51	100
King Edward VI School, Lichfield	22	90.9
Moorside High School, Werrington	139	84.9
Nether Stowe School, Lichfield	13	92.3
Ounsdale High School, Wombourne	171	76.6
Sir Thomas Boughey High School, Audley	10	80
Staffordshire university Academy	37	97.3
The de Ferrers Academy	282	80.5
The Friary School, Lichfield	93	78.5
Thomas Alleyne's High School, Uttoxeter	253	90.5
Walton High School, Stafford	13	100
Westwood College, Leek	72	86.1
Wolstanton High School, Newcastle	24	87.5

Staffordshire schools well below the national average

GCSE Full Course

School	Entries	Well below national average A* to C (72.4%)
Blyth Bridge High School and Sixth Form	153	42.5
Maryhill High school Media Arts college	16	43.8
Paulet High School, Burton on Trent	121	52.1

Staffordshire schools well above the national average

GCSE Short Course

School	Entries	Well above national average A* to C (53.9%)
Cannock Chase High a Specialist Science School	33	72.7
Cheslyn Hay Sport & Community High School	200	62
Madeley High School	128	65.6
Nether Stowe School, Lichfield	122	70.5
Stafford Sports College	12	75
Walton High School, Stafford	192	69.3
Wolstanton High School, Newcastle	184	67.9

Staffordshire schools well below the national average

GCSE Short Course

School	Entries	Well below national average A* to C (53.9%)
Abbot Beyne School, Burton on Trent	37	2.7
Alleyne's High School	35	8.6
Chesterton Community Sports College	94	19.1
Leek High – Specialist Technology School	83	19.3
Paulet High School, Burton on Trent	9	11.1
The Friary School, Lichfield	120	25

Staffordshire schools well above the national average

AS level

School	Entries	Well above national Average A to B (43.5%)
John Taylor High School	19	47.4
Moorside High School, Werrington	1	100
The Friary School, Lichfield	4	75
Thomas Alleyne's High School, Uttoxeter	3	66.7

Staffordshire schools well above the national average

A level

School	Entries	Well above national Average A to B (55.3%)
Chase Terrace Technology College	4	75
Cheslyn Hay Sport & Community High School	6	66.7
Codsall Community High School	8	62.5
John Taylor High School	20	65
Landau Forte Academy, Amington	22	68.2
Landau Forte Academy, QEMS	1	100
Norton Canes High School	1	100
Westwood College, Leek	5	100