

# Joint Forward Plan 2023-2028

Chris Bird  
Chief Transformation Officer  
Staffordshire and Stoke-on-Trent Integrated Care Board  
07.03.2024



# Introduction

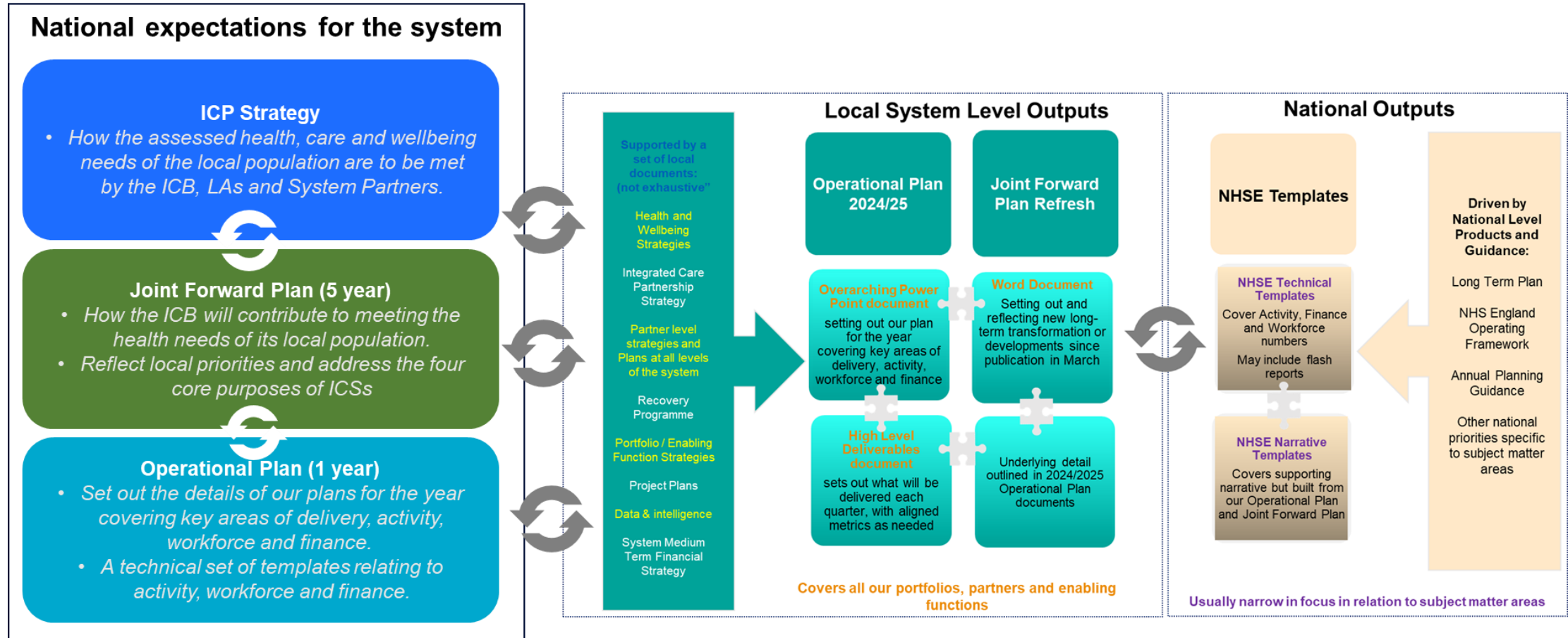
The set of slides outline: -

- A recap of the national expectation and key documents
- Recap on the summary of the national Joint Forward Plan (JFP) guidance and local response
- Strawman “suggested content” for the JFP
- Next steps including the timeline

The Staffordshire Health and Wellbeing Board are asked to : -

1. Note the local approach for the refresh of the JFP.
2. Consider the suggested content (straw man) for the addendum to the JFP and provide feedback. *Is there anything you expected to see that is missing?*
3. Consider the supporting statement which was in the June 2023 JFP and how you wish to address updating it for the JFP.
4. Agree to receiving the draft JFP and delegate sign off to the Chair of the HWB.

# System Outputs – a recap



# National Guidance on updating the Joint Forward Plan for 2024/25 - Overview

## National Guidance

- The Joint Forward Plan is a five-year plan, which is a statutory requirement. It should set how we will exercise our functions and statutory requirements over the next five years.
- [The guidance published on the 22nd December 2023](#) provides an opportunity to further develop and / or revise the JFP first published on the 30th June 2023, for the financial year 2024/25.
- A further set of [supporting information](#) was published on 17th January providing further recommendations and suggestions for content in relation to the statutory duties and content. These have been reflected in the suggested local content.
- Systems will continue to have the [same level of flexibility](#) to determine how the JFP is developed and structured.
- The JFP should be [reviewed and revised as appropriate before the start of each financial year](#).
- The JFP must include a statement of the final opinion of each HWB.

## Local Approach

- Our [first JFP](#) was published in June 2023.
- Given the level of work and depth of detail outlined in the plan we published in June 2023 we will be developing [an addendum](#) to that plan covering the suggested key areas outlined in the following slides.
- We will be [co-producing and sharing](#) the JFP content as it develops with our partners including the Health and Wellbeing boards.
- The final JFP will be published on the Integrated Care System and Integrated Care Board website.

# Priorities summary - Joint Forward Plan

## Stoke-on-Trent City Council Health & Well Being strategy priorities

- Getting the most healthy start in life
- Developing well into adulthood
- Promoting good physical health
- Promoting good mental health
- Supporting people to maintain independence
- Living well into old age
- Providing the best end of life care
- Building strong communities
- Living in a healthy home and environment
- Supporting sustainable employment, skills and local economy

## Staffordshire County Council Health & Well Being strategy priorities

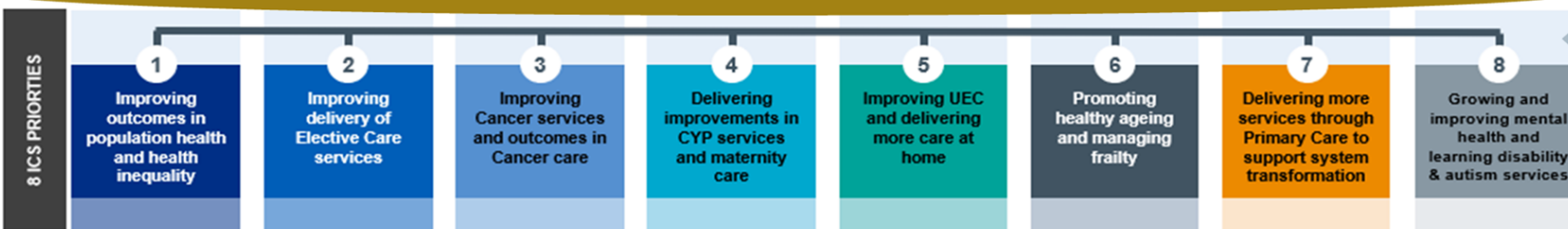
- Health in early life - Improving health in pregnancy and infancy with a priority focus on reducing infant mortality.
- Good mental health - Building strong and resilient communities and individuals who are in control of their own mental wellbeing
- Healthy weight - creating the conditions to help people to make healthy choices that will help adults and children reach a healthy weight.
- Healthy ageing - promoting well-being and enabling independence for older people.

## Integrated Care Partnership Strategy priorities

- Give infants and children the best start to life
- Enable children to thrive into adulthood, supporting physical, mental and social development
  - Enable adults to take ownership of health and wellbeing and achieve their potential
- Enable people to remain independent, active and connected in their communities with a plan for later life
- Maximise health and wellbeing in the last years of life by supporting people and carers with personalised care when needed

## Existing shared priorities across the Integrated Care Partnership

Improving health in pregnancy and infancy • Mental health • Learning disability and autism • Reducing drug and alcohol harm • Addressing obesity across the life course • Prevention and early intervention – long-term conditions (LTCs) and cancer • Improved prevention and management of LTCs • Reducing health inequalities • Healthy ageing • Personalised care • Improved employment • Digital transformation.



How we will work together; Our wider enablers, cross cutting themes and strategic development

Provider Plans and Strategies

# Introduction to the addendum and system context

## Introduction to the addendum and system context

- Productivity (organisational)
- System improvement (pathway)
- Place / locality / neighbourhood working with our partners
- Provider collaboratives / VCSE Alliance
- Refreshed supporting statement from HWB

## Structure of main part of addendum

- To reflect work that has developed locally since initial JFP publication
- To reflect any guidance that has been released after the initial JFP publication
- Involvement – summary of JFP survey outputs

## Appendix

- Legislative requirements – No changes to statutory duty requirements but need to include, within annex of document reference to how these are met
- Links to Existing strategies or plans to reference e.g. Primary Care Access Plan, Infrastructure strategy, Long-term Workforce Plan, Capital plans
- Underpinning plans that set out priority, deliverable, delivered through (this to include 2028/29 as the 5th year of the rolling programme where known).
- Tables for ICP strategy and life course approach to strengthen links between documents



# Structure of main part of addendum (straw man)

## Guidance suggests

- ICBs need to prepare a plan setting out how they propose to exercise their functions in the next five years and that these plans should be reviewed and / or revised before the start of the financial year.
- Annual review is an opportunity to update plans and address the last year of the five-year look ahead.
- Systems have the same flexibility to determine their JFP's scope and how it is developed and structured.
- For the majority of ICBs, revised plans are likely to be a continuation of the previous set of priorities published on the 30th of June 2023.

## Local Content

An update on developments and progress made since initial publication and justification that there is no material change to population and priorities content published on the 30th June 2023, recognising that any refresh of local JSNA's as they are published will need to be reflected.

1. Introduction to include: -
  - productivity (organisational)
  - system improvement (pathway)
  - place / locality / neighbourhood improvement
  - provider collaboratives / VCSE Alliance
2. ICP strategy, 5 P's (inc. focus on prevention and HI) and impact across portfolio development
3. Refreshed supporting statement from HWB

# Structure of main part of addendum (straw man)

## Guidance suggests

- Plans should be updated based on updated assumptions or priorities which could include any guidance that has been released after the initial JFP publication.
- Other content could include workforce, performance, digital/data, estates, procurement, PHM, system development and supporting wider social and economic development
- Previous local patient and public engagement exercises and subsequent action should inform the JFP.
- Any material change or / and major service change would require consultation / involvement / engagement.

## Local Content

Provide an update on the following areas: -

- Maternity and Neonates – Single Delivery Plan (unable to provide detail of plans at time of initial publication)
- Primary Care – Primary Care Access Recovery Plan and Dental (new guidance published and to reflect NHSE delegated services)
- NHS IMPACT
- Progress made as a system
- Place / locality / neighbourhood working with partners
- Links to Long Term workforce plan, infrastructure strategy, capital plan
- Long term activity and financial gap (link to operational plan – JFP is long term strategy with a focus on prevention, transformation)
- Summary of involvement including outputs from JFP survey, involvement activities within portfolio's, how this has informed the JFP and next steps.
- Ongoing involvement plans by portfolios/organisation



# Staffordshire Supporting Statement 2023/24 and 2024/25

*The Staffordshire Health and Wellbeing Board can confirm that the draft Joint Forward Plan (JFP) has been presented at the Board on the 8th June 2023. The JFP takes into account the Staffordshire Health and Wellbeing Strategy 2022-2027 and the joint priorities outlined in the Staffordshire and Stoke-on-Trent Integrated Care Partnership Strategy.*

Signed:



**Councillor Mark Sutton**

Chairman of the Staffordshire Health and Wellbeing Board

Staffordshire County Council

Proposed Statement for 2024/25

The Staffordshire Health and Wellbeing Board can confirm that the draft addendum to the Joint Forward Plan as part of the 2024/25 refresh, has been presented to the Board on the 7th March 2024. The JFP takes into account the Staffordshire Health and Wellbeing Strategy 2022-2027 and the joint priorities outlined in the Staffordshire and Stoke-on-Trent Integrated Care Partnership Strategy.

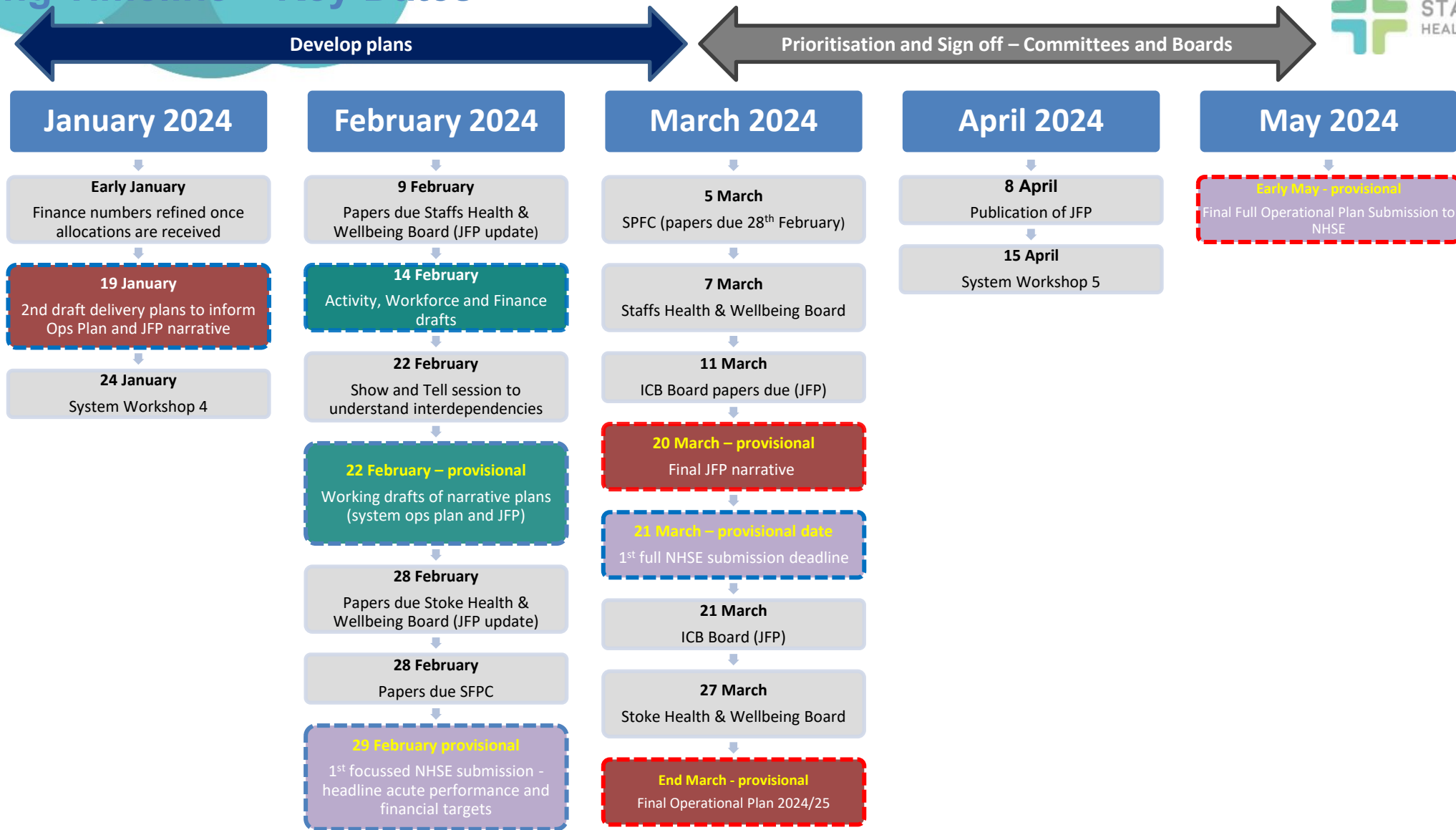
## Progress

- Initial strawman for JFP refresh presented at Staffordshire Health and Wellbeing Board 7th December 2023.
- National NHSE guidance published on the 22nd December and 17th January and reviewed locally.
- Work undertaken across portfolio's, leads and partners to develop the content for the addendum to the JFP.
- Approach for addendum to JFP discussed at HWB Officers meetings.

## Next Steps

- Opportunity for feedback from the Health and Wellbeing Board about the approach and strawman of the JFP content.
- Continue to work with portfolios and partners to finalise the JFP, reflecting any changes in the JSNA when available.
- Present draft JFP to Health and Wellbeing Board for feedback and agreement.
- Delegated sign off for Chair of Health and Wellbeing Board to allow for feedback to be incorporated from Staffordshire HWB, Stoke-on-Trent HWB and ICB Board.
- Present draft JFP to ICB Board for feedback and sign off.

# Planning Timeline – Key Dates



First and second drafts of local outputs
Final versions of local outputs
First draft NHSE submission
Final version NHSE submission

**Key:** All unknown or provisional dates are highlighted in yellow pending guidance publication or system agreement.