

Joint Forward Plan 2023-2028

Chris Bird
Chief Transformation Officer
Staffordshire and Stoke-on-Trent ICB
07.12.23



Background

- All systems were expected to develop and publish a Joint Forward Plan. This was in addition to the annual publication of the Operational Plan.
- The draft JFP was presented to the H&W Board on the 8th June 2023 for feedback and agreement for statement of opinion being included.
- JFP was published on the 30th June 2023.
- Annual refresh of the JFP is a requirement for all systems with Health and Wellbeing Boards.

The guidance

National expectations and policy

ICP Strategy

- How the assessed health, care and wellbeing needs of the local population are to be met by the ICB, LAs and System Partners.

Joint Forward Plan (5 years)

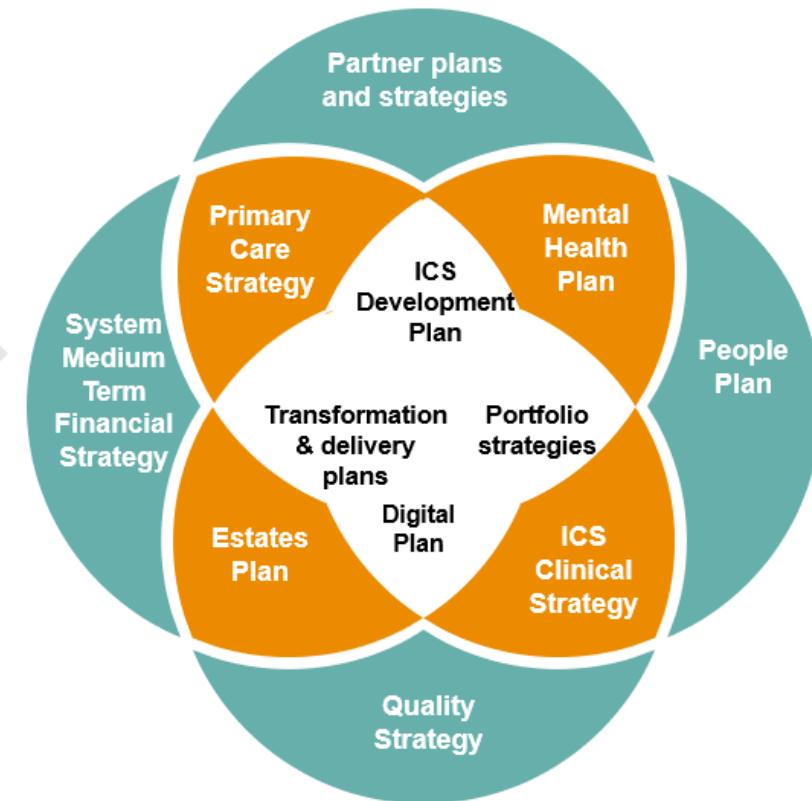
- How the ICB will contribute to meeting the health needs of its local population.
- Reflect local priorities and address the four core purposes of ICSs

One year Operational Plan

- Set out the details of our plans for the year covering key areas of delivery, activity, workforce and finance.
- A technical set of templates relating to activity, workforce and finance.

Supports and supported by a set of enabling delivery plans and strategies

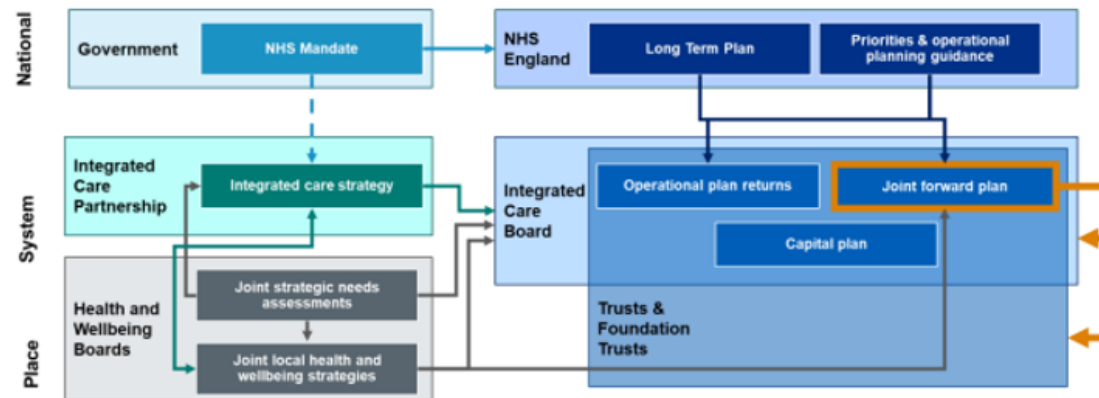
Local system plans and strategies



What is a JFP?

- The JFP is a five year plan, set within a statutory framework.
- It will be updated on an annual basis in collaboration with the Integrated Care Partnership and local Health and Wellbeing Boards (HWBs).
- The JFP is a five-year plan covering 2023 to 2028.
- It outlines how the ICB will support the delivery of the ambitions articulated in the Integrated Care Partnership Strategy (as presented initially to the HWB in March 2023))

- It has a focus around
 - Joint priorities across the Integrated Care System (ICS)
 - Ongoing National Long Term Plan commitments as set out in 2019
 - Feedback from our population
 - The need to restore access to services to at least pre-Covid levels
 - Our locally determined actions to address system priorities
 - Other national guidance and frameworks
 - How the ICB is exercising its key functions and discharging its statutory duties in an effective way.



Stoke-on-Trent City Council Health & Well Being strategy priorities

- Getting the most healthy start in life
- Developing well into adulthood
- Promoting good physical health
- Promoting good mental health
- Supporting people to maintain independence
- Living well into old age
- Providing the best end of life care
- Building strong communities
- Living in a healthy home and environment
- Supporting sustainable employment, skills and local economy

Staffordshire County Council Health & Well Being strategy priorities

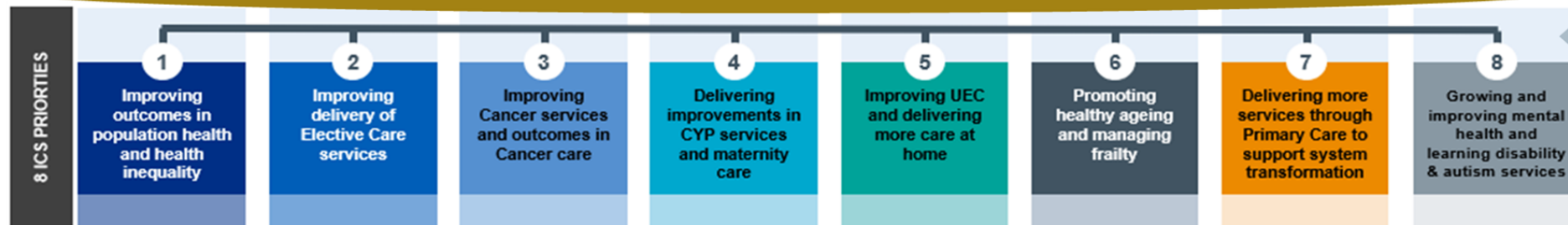
- Health in early life - Improving health in pregnancy and infancy with a priority focus on reducing infant mortality.
- Good mental health - Building strong and resilient communities and individuals who are in control of their own mental wellbeing
- Healthy weight - creating the conditions to help people to make healthy choices that will help adults and children reach a healthy weight.
- Healthy ageing - promoting well-being and enabling independence for older people.

Integrated Care Partnership Strategy priorities

- Give infants and children the best start to life
- Enable children to thrive into adulthood, supporting physical, mental and social development
 - Enable adults to take ownership of health and wellbeing and achieve their potential
- Enable people to remain independent, active and connected in their communities with a plan for later life
- Maximise health and wellbeing in the last years of life by supporting people and carers with personalised care when needed

Existing shared priorities across the Integrated Care Partnership

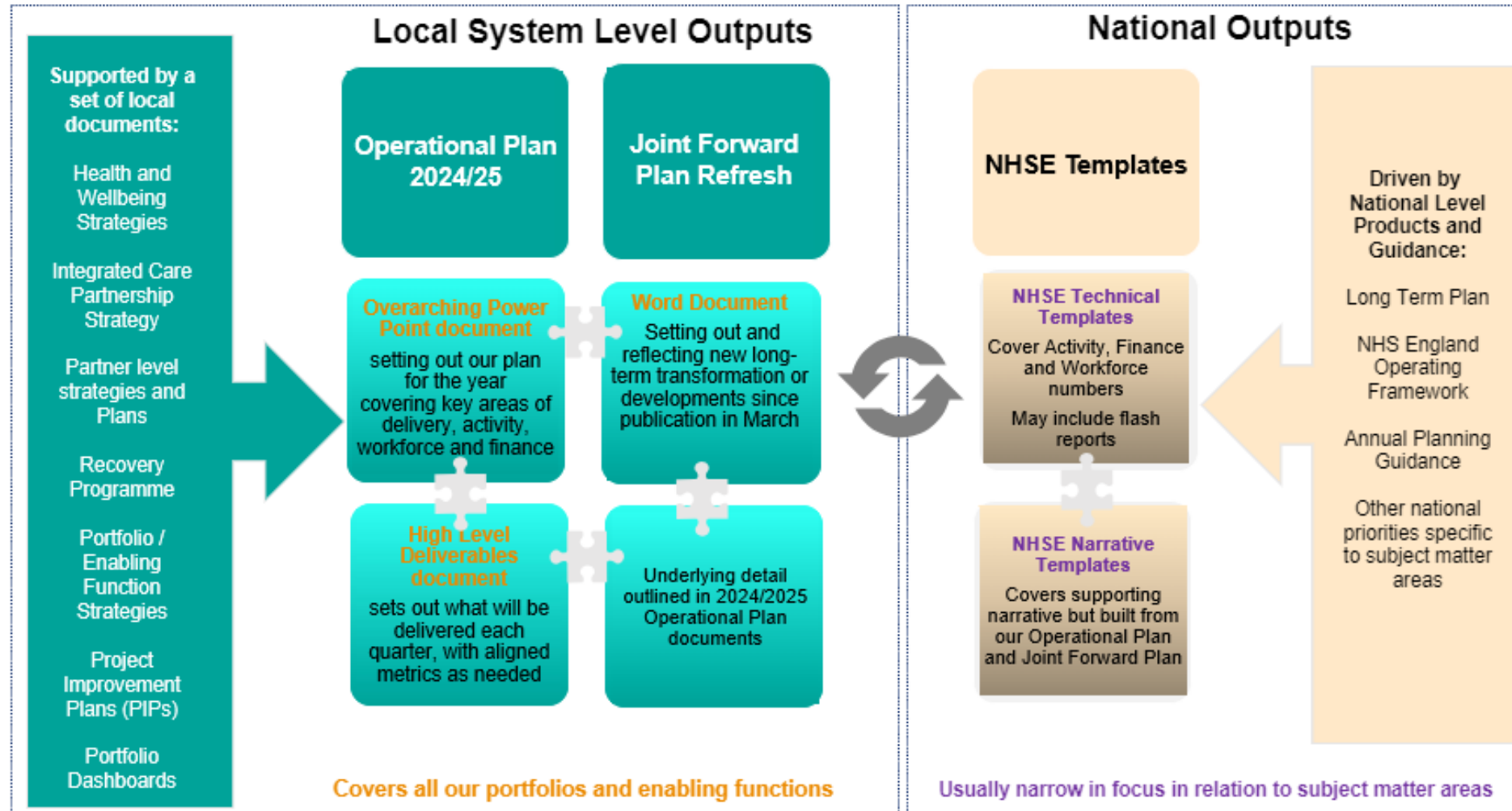
Improving health in pregnancy and infancy • Mental health • Learning disability and autism • Reducing drug and alcohol harm • Addressing obesity across the life course • Prevention and early intervention – long-term conditions (LTCs) and cancer • Improved prevention and management of LTCs • Reducing health inequalities • Healthy ageing • Personalised care • Improved employment • Digital transformation.



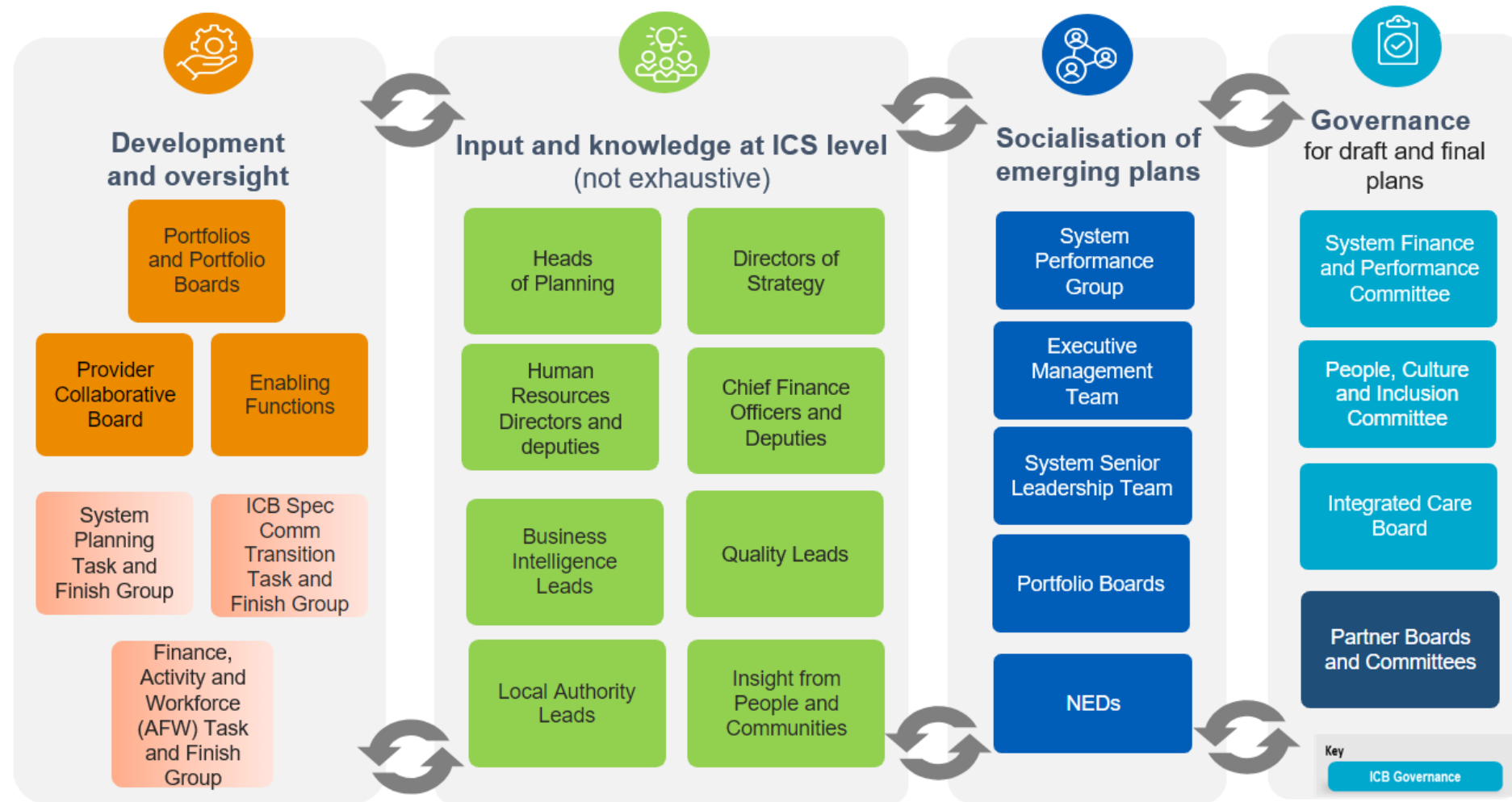
How we will work together; Our wider enablers, cross cutting themes and strategic development

Provider Plans and Strategies

Approach to the refresh




Approach to refresh



Health and Wellbeing Boards

JFP Suggested areas for refresh

- Reflecting any changes to local authority priorities.
- Reflecting any changes to provider priorities and plans.
- Add Ongoing Recovery and over 75 population piece.
- How we have used ongoing engagement to refresh the plan.
- Long term Finance strategy and recovery.
- Legacy Long Term Plan elements not covered in current version e.g. Stroke.
- Portfolios to reflect any new areas of focus i.e. Single Delivery Plan for Maternity and Neonates.
- Enablers to reflect any new areas of focus i.e. national people plan.
- Cross-cutting themes to reflect any new areas of focus.
- Impact of ICS wide strategies published since June.
- Wider strategic system development to reflect any new areas of focus (Neighbourhood and place development)
- Clinical and Professional Leadership focus.
- Specialised commissioning delegation ongoing and specialised commissioning priorities/planning



Have we
missed
anything?

Next Steps

- First System Task and Finish Group – 23rd November 2023
- Work has commenced across portfolios to support refresh
- Guidance expected shortly
- Updates and refresh of JFP requested to be presented to the Staffordshire Health and Wellbeing Board on the 7 March 2024