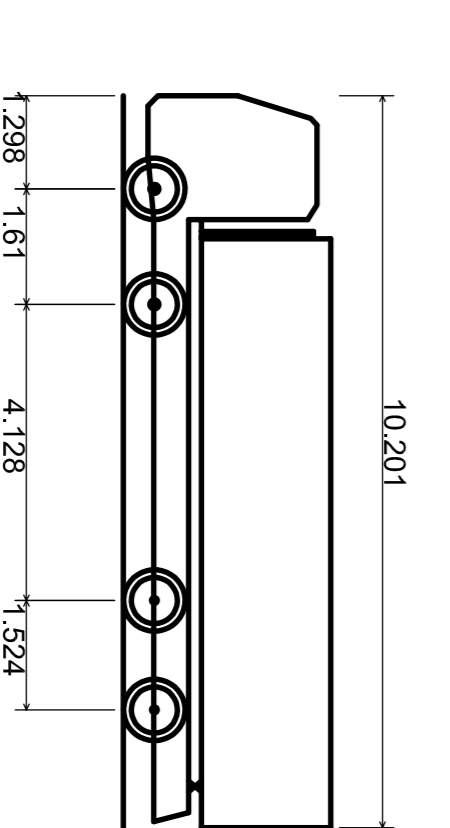
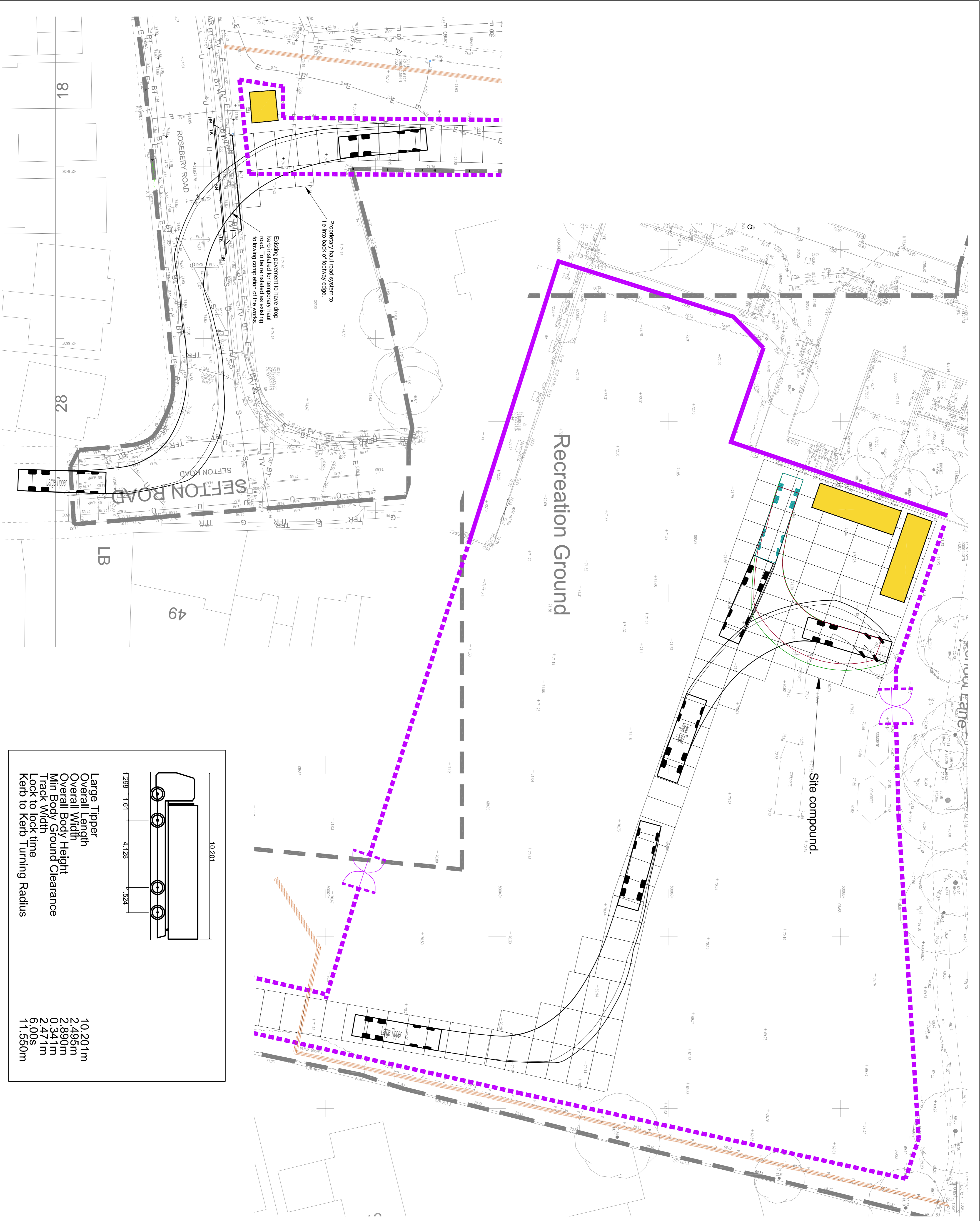


Notes:



Large Tipper  
 Overall Length 10 201m  
 Overall Width 2 495m  
 Overall Body Height 2 890m  
 Min Body Ground Clearance 0 341m  
 Track Width 2 471m  
 Lock to lock time 6 005  
 Kerb to kerb Turning Radius 11 550m

**PRELIMINARY**

P 2 TOP SURVEY/INSPECTED AND TRACKING REVISIONS P 1 PRELIMINARY/ISSUE STATUS REV DESCRIPTION DRAWN CHECKER DATE P = Preliminary, T = Tender, A = Approval, C = Construction, AS = As Built	EH MD 30/08/19 MD MD 12/08/19
CLIENT <b>Midas Construction</b>	
ARCHITECT <b>Stride Treglown</b>	
PROJECT TITLE <b>Dosthill Primary Academy</b>	
DRAWING TITLE <b>Proposed Haul Road Tracking In</b>	
<p> <b>Ciegg Associates</b>          CIVIL AND STRUCTURAL CONSULTING ENGINEERS          Ciegg Associates Ltd          Byer Ash Business Park          Trokente          Wiltshire          BA14 8HE          www.cieggassociates.co.uk          Tel: 01225 541088       </p>	SCALE @ A1 DRAWN BY 1:200 EH CHECKED BY MD DATE Jun-19
PROJECT ORGANIZATION ZONE LEVEL TYPE INDEX DRAWING NO. STATUS DATE DPS CA 00 XXDR C 202 P 02	